



**OIL CITY PRESS LTD.**

*Quality Printing Since 1953*

# ADOBE CREATING PRESS-READY PDF FILES

Version 2.0 • April 2012

# **How To Create Adobe PDF Files for Print and Press Acrobat 6 (PDF 1.5) Version**

© 2004 Adobe Systems Incorporated. All rights reserved.

How To Create Adobe® PDF Files for Print and Press, Acrobat 6 (PDF 1.5) Version.

If this guide is distributed with software that includes an end user agreement, this guide, as well as the software described in it, is furnished under license and may be used or copied only in accordance with the terms of such license. Except as permitted by any such license, no part of this guide may be reproduced, stored in a retrieval system, or transmitted, in any form or by any means, electronic, mechanical, recording, or otherwise, without the prior written permission of Adobe Systems Incorporated. Please note that the content in this guide is protected under copyright law even if it is not distributed with software that includes an end user license agreement.

The content of this guide is furnished for informational use only, is subject to change without notice, and should not be construed as a commitment by Adobe Systems Incorporated. Adobe Systems Incorporated assumes no responsibility or liability for any errors or inaccuracies that may appear in the informational content contained in this guide.

Please remember that existing artwork or images that you may want to include in your project may be protected under copyright law. The unauthorized incorporation of such material into your new work could be a violation of the rights of the copyright owner. Please be sure to obtain any permission required from the copyright owner.

Any references to company names in sample templates are for demonstration purposes only and are not intended to refer to any actual organization.

Adobe, Acrobat, Distiller, FrameMaker, Illustrator, InDesign, PageMaker, and Photoshop are either registered trademarks or trademarks of Adobe Systems Incorporated in the United States and/or other countries.

Windows, Microsoft, and Microsoft Word are trademarks of Microsoft Corporation. OpenType is either a registered trademark or a trademark of Microsoft Corporation in the United States and/or other countries. Mac OS and OS X are trademarks of Apple Computer Corporation. Solaris is a trademark or registered trademark of Sun Microsystems, Inc. in the United States and other countries. UNIX is a registered trademark of The Open Group.

All other trademarks are the property of their respective owners.

Adobe Systems Incorporated, 345 Park Avenue, San Jose, California 95110, USA.

Notice to U.S. Government End Users. The Software and Documentation are “Commercial Items,” as that term is defined at 48 C.F.R. §2.101, consisting of “Commercial Computer Software” and “Commercial Computer Software Documentation,” as such terms are used in 48 C.F.R. §12.212 or 48 C.F.R. §227.7202, as applicable. Consistent with 48 C.F.R. §12.212 or 48 C.F.R. §§227.7202-1 through 227.7202-4, as applicable, the Commercial Computer Software and Commercial Computer Software Documentation are being licensed to U.S. Government end users (a) only as Commercial Items and (b) with only those rights as are granted to all other end users pursuant to the terms and conditions herein. Unpublished-rights reserved under the copyright laws of the United States. Adobe Systems Incorporated, 345 Park Avenue, San Jose, CA 95110-2704, USA. For U.S. Government End Users, Adobe agrees to comply with all applicable equal opportunity laws including, if appropriate, the provisions of Executive Order 11246, as amended, Section 402 of the Vietnam Era Veterans Readjustment Assistance Act of 1974 (38 USC 4212), and Section 503 of the Rehabilitation Act of 1973, as amended, and the regulations at 41 CFR Parts 60-1 through 60-60, 60-250, and 60-741. The affirmative action clause and regulations contained in the preceding sentence shall be incorporated by reference.

**Introduction**

Why use a PDF workflow? .....	1
About PDF versions .....	2
About the PDF/X family of standards .....	3

**Preparing Content for PDF Creation**

If you are preparing for high-end printing .....	5
If you are preparing for desktop printing .....	6
If you are preparing for digital printing .....	6
Color considerations .....	7
Managing fonts .....	9
Setting up transparency for successful output .....	11
Preflighting documents in authoring applications .....	16

**Creating Print-Ready PDF Files**

Creating a custom page size .....	18
Saving and exporting to Adobe PDF .....	20
Printing to the Adobe PDF printer .....	28
Converting PostScript files to Adobe PDF .....	31
Saving documents as PostScript files for PDF .....	33
Default Adobe PDF settings files .....	37

**Inspecting and Fine-Tuning the PDF Document**

Checking fonts .....	40
Preflighting documents in Acrobat .....	41
Using Acrobat previewing features .....	44
Using Acrobat magnification tools .....	47
Soft proofing PDF documents .....	49
Editing text, images, and graphic objects .....	50
Optimizing your PDF documents for print .....	53

**Handing Off Print-Ready PDF Files to a Service Provider**

Before you hand off .....	57
What to give the service provider .....	58

**Resource Guide****Settings and options**

Transparency flattener options .....	61
Flattener preview options .....	62
Recommended Adobe PDF settings for a print production workflow .....	63

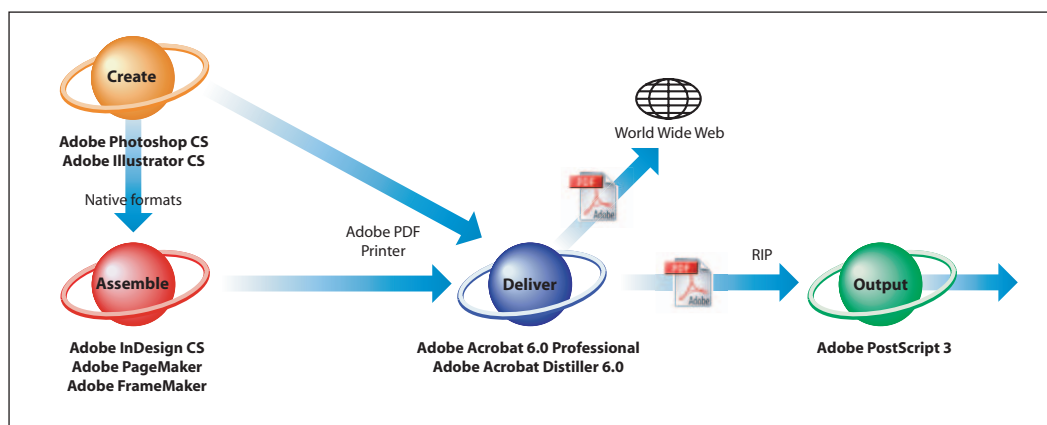
<b>Index</b> .....	76
--------------------	----

# Introduction

*How to Create Adobe PDF Files for Print and Press* guides you through the basic steps of producing PDF files from applications for high-quality output. It focuses mainly on the composite PDF workflow, but also provides some basic information about the pros and cons of a pre-separated PostScript workflow. This document also explains the importance of producing good PostScript files for distilling, and describes the processes for getting there.

In conjunction with using the information in this document, it's important to discuss print issues with your print service provider throughout the preparation, creation, and delivery phases of the PDF print workflow. A strong partnership with your service provider can yield valuable information about the capabilities of the printing environment, as well as appropriate settings and defaults that can prevent costly errors.

The processes described in this guide require the use of one or more illustration or page-layout applications and Adobe® Acrobat® 6.0 Professional. This guide covers Windows and Mac OS X versions of Adobe Photoshop® CS, Adobe Illustrator® CS, Adobe InDesign® CS, Adobe FrameMaker® 7.1 (Windows and Solaris), Adobe FrameMaker 7.0 (Mac OS), and Adobe PageMaker® 7.0.1. For non-Adobe applications, this guide provides instructions for creating PDF files using Acrobat Distiller® 6.0.



*With Adobe professional publishing products, you can create, assemble, and deliver your projects. With Adobe PDF, you can deliver those projects with confidence that they will print correctly.*

## Why use a PDF workflow?

To improve reliability and throughput, print publishers are adopting PDF workflows over traditional PostScript workflows. PDF provides the reliable *digital master* for streamlined printing, smoother communication between customers and print houses, faster production, fewer errors, and higher quality output. When clients submit print jobs as composite PDF files instead of as pre-separated PostScript files—where each color is in a different file—customers can make late-stage edits or design changes, and avoid costly delays that result when inaccurate files have to be returned or reworked by service providers.

The following list identifies some of the benefits of using a composite PDF workflow throughout the entire life cycle of a print production project:

- All elements of a document are within a single, self-contained file. This means that all the fonts, images, and graphics are included automatically when distributed for review, or when proofed or printed.

- Adobe PDF documents can be viewed exactly as they are intended to print. You can view with magnification power up to 6400% to see the details in illustrations and more readily find overprinting and trapping problems.
- Device-specific decisions can be made at output time by the print service provider, rather than early in the process by the designer.
- PDF files are generally smaller than their original authoring formats.
- At the appropriate time in the workflow, your service provider can either output the Adobe PDF file directly, or process it using tools from various sources for such post-processing tasks as preflight checks, trapping, imposition, and color separation.
- At print time, an Adobe PDF file can be repurposed to suit the mechanical requirements of different devices, such as page size adjustments, color reproduction characteristics, or page orientation and imposition.

## About PDF versions

When you create PDF files, you need to decide which PDF version to use. Generally speaking, you should use the most recent version (in this case version 1.5) unless there's a specific need for backward compatibility, because the latest version will include all the latest features and functionality. The following table compares some of the functionality in different PDF versions.

**Note:** *Functionality within a particular PDF version may vary according to the application. For example, Adobe InDesign can embed double-byte fonts in PDF 1.3 files, but Acrobat Distiller cannot.*

PDF 1.3	PDF 1.4	PDF 1.5
PDF files can be opened by Acrobat viewers 3.0 and later. However, features specific to later versions may be lost or not viewable.	PDF files can be opened by Acrobat viewers 3.0 and later. However, features specific to later versions may be lost or not viewable.	Most PDF files can be opened by Acrobat viewers 4.0 and later. However, features specific to later versions may be lost or not viewable.
Only CalRGB supported.	Only sRGB supported.	Only sRGB supported.
ICC color management is not supported.	ICC color management is supported.	ICC color management is supported.
Cannot contain artwork that uses live transparency effects. Any transparency must be flattened prior to converting to PDF 1.3. (See "About transparency flattening" on page 11.)	Supports the use of live transparency in artwork.	Supports the use of live transparency in artwork.
Layers are not supported.	Layers are not supported.	Preserves layers when creating PDF files from applications that support the generation of layered PDF documents, such as Illustrator CS or InDesign CS.
Transparency is flattened prior to creating PDF 1.3 files. This may introduce overprinting situations, especially when spot inks are used.	Spot colors and overprinting can be preserved without flattening, depending on the application used and the behavior specified by the user.	Spot colors and overprinting can be preserved without flattening, depending on the application used and the behavior specified by the user.
DeviceN color space with 8 colorants are supported.	DeviceN color space with 8 colorants are supported.	DeviceN color space with up to 31 colorants are supported.
Smooth-shaded objects are converted to images.	Smooth shading is supported.	Smooth shading is supported.
Masked images do not display or print correctly.	Masked images display and print correctly.	Masked images display and print correctly.

PDF 1.3	PDF 1.4	PDF 1.5
Pages can be up to 45 inches in either dimension.	Pages can be up to 200 inches in either dimension.	Pages can be up to 200 inches in either dimension.
Double-byte fonts can be embedded. (Distiller converts the fonts when embedding.)	Double-byte fonts can be embedded.	Double-byte fonts can be embedded.
TrueType fonts are not searchable.	TrueType fonts are searchable.	TrueType fonts are searchable.
40-bit RC4 security is supported.	128-bit RC4 security is supported.	128-bit RC4 security is supported.
JPEG2000 compression is not supported.	JPEG2000 compression is not supported.	JPEG2000 compression is supported, which enables tile sizes.
Patterns display as 50% gray, but print correctly.	Patterns display and print correctly.	Patterns display and print correctly.

## About the PDF/X family of standards

PDF/X (Portable Document Format Exchange) is a vendor-neutral ISO standard for document exchange. PDF/X is a subset of the PDF specification, intended to reflect the best practices for prepress document exchange, including the elimination of many of the color, font, and trapping variables that lead to printing problems. The PDF/X family of standards restricts the contents of a PDF file to only those things that are appropriate for print production. PDF/X compliant files may be used wherever PDF files are exchanged as digital masters for print production.

PDF/X consists of a family of standards targeted at different needs in the graphic arts industry. Currently, the most widely used standards for a print publishing workflow are available in two different types of PDF/X formats: PDF/X-1a and PDF/X-3. For more information on PDF/X, see the Adobe Web site ([www.adobe.com](http://www.adobe.com)) and related Web sites (<http://www.pdfinfo.com>, <http://www.pdf-x.com>). For information on creating PDF/X compliant files using Acrobat Distiller, see “PDF/X settings” on page 73. For information on creating PDF/X compliant files using the Preflight feature in Acrobat Professional, see Complete Acrobat 6.0 Help.

**Note:** The PDF/X specification does not address image resolution and other important criteria related to printing. Therefore, unless the original file addresses these issues, the resulting PDF/X-1a or PDF/X-3 compliant file could contain pixelized, low-resolution image data or other preparation errors that will impact output. Consult your print service provider to ensure that the settings files you use match the requirements of the specific printing situation.

### PDF/X-1a

The PDF/X-1a:2001 specification supports only a CMYK (and spot-color) workflow, targeted to a specific printing condition (for example, web offset printing according to SWOP). Some requirements of PDF/X-1a compliant files include:

- The PDF version is 1.3 (Acrobat 4.0).
- All fonts are embedded and subset. (Nonembeddable fonts will cause any PDF/X compliance test to fail.)
- Images and graphic objects must be created using only CMYK, DeviceGray, DeviceN, or spot color spaces.
- Color management is not allowed.
- The trapping key must be defined.
- Output intents are specified.
- The trim box or art box is defined.
- Additional keys are included to identify the file.

- Transfer functions and halftone screen frequencies are restricted.

### PDF/X-3

The PDF/X-3:2001 specification is largely built on the PDF/X-1a standard, but allows device-independent color spaces for color-managed workflows (where you apply ICC color profiles to images or other elements based on a particular output intent), and disallows security. Some requirements of PDF/X-3 compliant files include:

- The PDF version is 1.3 (Acrobat 4.0).
- Device-independent color is allowed, in addition to CMYK and spot colors.
- All fonts are embedded and subset. (Nonembeddable fonts will cause any PDF/X compliance test to fail.)
- The trapping key must be defined.
- Output intents are specified.
- The trim box or art box is defined.
- Additional keys are included to identify the file.
- Transfer functions and halftone screen frequencies are restricted.

***Note:** Data represented in this document reflects the 2001 versions of the PDF/X family of standards: PDF/X-1a:2001 and PDF/X-3:2001. New PDF/X standards were ratified by the ISO in 2003, but are not described here. For more information on the PDF/X-1a:2003 and PDF/X-3:2003, visit <http://www.pdfx.info>. Adobe Acrobat 6.0 Professional and InDesign CS support the creation of PDF/X-1a and PDF/X-3 compliant files. These files comply with the PDF/X-1a:2001 and PDF/X-3:2001 standard.*



# Chapter 1: Preparing Content for PDF Creation

---

With the use of presets (predefined sets of options for creating PDF files and controlling the flattening of transparent objects) and common tools in Adobe print publishing applications, PDF creation is easier and more reliable than ever before. Even so, it's important to approach PDF creation in an informed and consistent way in order to achieve predictable, reliable output. For example, planning ahead for your use of fonts, colors, and so on is going to make an easier flow. The upcoming three sections outline the basic areas that need to be addressed for each of the three most common print-output workflows: high-ending, desktop, and digital printing. The sections that follow provide more specific procedural details and background information.

**Note:** Some settings, such as compression and font subsetting, are available when creating PDF files directly from *Illustrator* and *InDesign*, as well as in the *Distiller Adobe PDF Settings* dialog box.

## If you are preparing for high-end printing

Before creating an Adobe PDF file to send to a service provider, make sure that the document meets your service provider's specifications. The following list offers some recommendations:

- Ask your service provider for an Adobe PDF settings file tailored to the print job. Or view your Adobe PDF export settings prior to exporting, and then adjust them as necessary. You may be able to use the default Adobe PDF preset, called "Press," when you export your document. (See "Printing to the Adobe PDF printer" on page 28.)
- Use only high-resolution images in your document, or make sure that your service provider has access to the original high-resolution images.
- Ensure that the images used in the authoring application are in the same color space, and prepared for the same printing condition. In most cases, the preferred color space is CMYK. Some service providers, however, prefer RGB color or color-managed data. Consult your service provider for the proper color space and reproduction criteria.
- Check the document for structural integrity using a good preflighting tool. Both *InDesign* and *Acrobat* support preflighting. (See "Preflighting documents in *InDesign*" on page 17 and "Preflighting documents in *Acrobat*" on page 41.)
- Embed and subset fonts when creating PDF documents from *Illustrator*, *InDesign*, or *Distiller*. (See "Managing fonts" on page 9.)
- To prevent unnecessary separations from being printed, review the spot colors in your ink list. You may want to convert some spot colors to process equivalents, or map them to other spot colors, if that functionality is available in your authoring application. (See "Spot color conversion" on page 7.)
- If your document includes transparency, create a custom transparency flattener preset using *Illustrator*, *InDesign*, or *Acrobat*, or use the High Resolution default preset. (See "Creating and sharing custom flattener presets (*Illustrator* and *InDesign*)" on page 15 and "Using transparency flattener presets (*Illustrator* and *InDesign*)" on page 14.)
- Preview separations and ink coverage limits, transparency flattening, and overprinting on-screen. (See "Previewing color separations" on page 46, "Previewing transparency flattening (*Illustrator* and *InDesign*)" on page 12, "Previewing transparency flattening in *Acrobat*" on page 45 and "Previewing how colors will overprint" on page 46.)

- To produce consistent color when sending documents to a press, set up your devices for color management by calibrating your monitor. Set up color management in your applications, and synchronize the color settings among the applications. Optionally, soft-proof the document. Then, either convert to CMYK, or work entirely in RGB mode if your service provider has a color-management system that can read the profile in your RGB file and make the proper conversion to CMYK. (See “Color-management basics” on page 8, and “Soft proofing PDF documents” on page 49.)

## If you are preparing for desktop printing

- If your document contains transparent objects, you can use a default preset in the authoring application to control the flattening process, depending on the document’s intended use. For quick proofs, use the Low Resolution preset. For desktop proofs and print-on-demand documents, use the Medium Resolution preset. (See “Creating and sharing custom flattener presets (Illustrator and InDesign)” on page 15 and “Using transparency flattener presets (Illustrator and InDesign)” on page 14.)
- Since most desktop printers don’t support overprinting, you can simulate the effects of overprinting by selecting Simulate Overprint in the Output section of the Print dialog box in InDesign, Illustrator, or Acrobat. If you intend to use a file for final output, do not select this option. Be aware that if you don’t select Simulate Overprint, any overprinting options that you’ve selected in the document will print correctly on a PostScript 3 printer that supports overprinting. (See “Previewing how colors will overprint” on page 46.)
- To produce consistent color, set up your devices for color management by calibrating your monitor and by creating or installing profiles for each device in the workflow. Set up color management in your applications, and synchronize the color settings among the applications. Edit your image or document, and then optionally soft proof the document. In Photoshop, you can use File > Print with Preview to soft proof. Set printer options. (See “Color-management basics” on page 8, and “Soft proofing PDF documents” on page 49.)

**Note:** Remember that, like monitors, color printers vary greatly in color reproduction quality; thus, proofs from your service provider are the best way to verify how the finished piece will look.

## If you are preparing for digital printing

- Target the Adobe PDF printer and create a custom Adobe PDF settings file using the default Press Quality settings as a starting point. In the General tab, change Resolution to 1200 dpi, or the appropriate resolution defined by your service provider. In the Images tab, change the value for the For Images Above option in the Monochrome Images section to 2400 ppi. These adjustments are necessary because digital printing devices use a lower resolution than imagesetters. (See “Creating custom Adobe PDF settings files” on page 38.)
- To produce consistent color, set up your devices for color management by calibrating your monitor and by creating or installing profiles for each device in the workflow. Set up color management in your applications, and synchronize the color settings among the applications. Edit your image or document, and then optionally soft proof the document. In Photoshop, you can use File > Print with Preview to soft proof. Set printer options. If possible, obtain an ICC profile from the service provider, print shop, or manufacturer of the digital printer. (See “Color-management basics” on page 8, and “Soft proofing PDF documents” on page 49.)

**Note:** Remember that, like monitors, color printers vary greatly in color reproduction quality; thus, proofs from your service provider are the best way to verify how the finished piece will look.

## Color considerations

You can ensure a manageable color workflow by understanding and planning your usage of the interdependent color features of Adobe products. Following is some basic information on how Acrobat and PDF handle various common color operations and functions as well as a quick introduction to the formal color-management process that you can use through the Adobe Creative Suite applications.

### Spot color conversion

Although spot inks can accurately reproduce colors that are outside the gamut of process colors, they require their own plates on a printing press and, when overused (including duplicate spot-color definitions), can add unnecessary costs to a print job. While you may want to take advantage of unlimited colors for an on-screen PDF, you can also temporarily reduce the number of colors used for easier printing of that same PDF by changing specified spot colors to their closest-possible CMYK equivalents. For example, if a document contains two similar spot colors when only one is required, the Ink Manager in InDesign can create an alias to a different spot or process color, to be used at print time. For information on previewing how converted spot colors will overprint, see “Previewing how colors will overprint” on page 46.

***Note:** Spot colors involved in transparency should not be converted to process colors after flattening, as this can introduce problems.*

### Imported color graphics

Consider the following information when you import color graphics between applications.

**Multitoned EPS files** Acrobat 6.0 supports and preserves both process colors and spot colors in multitones directly from the authoring application (such as Photoshop) when you manually distill a PostScript version of your application file, as well as when you place those EPS files in InDesign, and then either export or distill to PDF.

**Colorized TIFF files** You can colorize a 1-bit TIFF file in either PageMaker or InDesign. The programs create a color background behind the 1-bit image data, which itself always prints on the black plate. Exporting these files to PDF or using Distiller to convert them preserves the colorized backgrounds, and correctly separates them. The image data marked on the black plate correctly knocks out the colored background. In InDesign, you can select the image and set it to overprint.

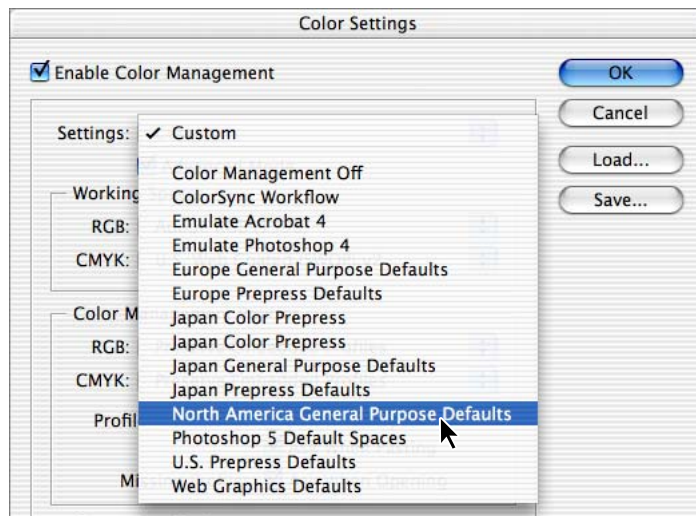
Third-party programs that can colorize 1-bit (monochrome) and 8-bit (grayscale) images and the image data itself often produce unexpected results and should be avoided. If a colorized effect is necessary, multitoned EPS files will produce the same effect and more, and are reliable in the workflow.

**Vector graphics containing custom color gradients or blends** Overlaying objects containing transparency, especially in blends, might produce unexpected colors. If transparency is applied to vector graphics, be sure to proof the document on paper and on-screen.

If you create PDF files using the Illustrator Save As or InDesign Export command (where transparency is preserved), instead of distilling a PostScript file (where transparent objects are flattened), you can preview the effects of transparency flattening and overprinting. Illustrator, InDesign, and Acrobat provide a Flattener Preview tool.

## Color-management basics

A shared color-management system is built into Photoshop, Illustrator, InDesign, and Acrobat 6.0 Professional. This makes it easy to ensure that each application handles color consistently. The color settings files (.csf) installed with the applications provide an easy way to get started, and they can be customized to suit your needs. Be sure to coordinate color usage with your print service provider. Your service provider may want to provide a color settings file tailored to your specific workflow.



Choose or customize a Color Settings file to suit your needs.

**Note:** PageMaker includes support files for two color-management systems: the Kodak Digital Science Color Management System and the Apple ColorSync Color Management System (Mac OS only). For details, see PageMaker Help. FrameMaker does not support a color-management system.

### To start using color management in your workflow:

- 1 Calibrate your monitor. Use a visual calibration method, such as Adobe Gamma (Windows) or Monitor Calibrator (Mac OS), or use third-party software and hardware for more accurate calibration.
- 2 Specify a color-management engine, define working spaces, and set other color-management options. The settings in the Color Settings dialog box control how the color-management system works with RGB, CMYK, and grayscale images.

**Note:** Although you don't have to customize the color settings when first starting the application, it's recommended that you do. The choices you make in the Color Settings dialog box influence how the colors in images are displayed.

- 3 Load the same Color Settings file into each application's Color Settings dialog box, to synchronize the way each color-managed application handles color. For more information about synchronizing color settings, see the application's documentation.
- 4 Create or acquire profiles of devices in your workflow, such as your desktop printer. The application's color-management system needs to know the behavior of the devices in your workflow in order to properly convert the color values in a document so the devices produce consistent color. Common ways to obtain a profile include:
  - Installing the driver for your desktop printer. When you install the printer driver, a profile is usually installed in your computer system. The color-management system can access this profile so it will appear as a color-management option when you print from the application.

- Creating a profile using a third-party measuring instrument and software. This method can create more accurate descriptions of the behavior of specific devices.

**Note:** You should also make separate profiles for every type of paper used with your desktop printer. A glossy paper is capable of displaying a different range of colors than a matte paper. Use a third-party measuring instrument and software to generate custom paper profiles.

Full treatment of color management is beyond the scope of this document. To learn more about color management and Adobe print publishing applications, see Appendix B, “Resource Guide.”

## Managing fonts

One of PDF’s great strengths is its ability to support and display text and typefaces as they were originally intended. While this process is generally seamless, it’s helpful to know how Acrobat manages fonts to ensure they perform as needed. Two areas in which this information may be important to you are when you need to perform late-stage editing or when you use double-byte fonts.

To make sure that the text in PDF documents prints as it appears on screen, make sure that you are using fonts that can be downloaded to a printer. Some fonts cannot be downloaded to a printer, either because the font is a bitmap or because embedding of the font is restricted in that document. In these cases, a substitute font is used for printing, and the printed output may not match the screen display exactly.

### About font embedding and substitution

Adobe products can embed and subset fonts at 100 percent, if the fonts contain a setting by the font vendor that permits them to be embedded. Embedding ensures that the original font is used to output the text, rather than a substituted font.

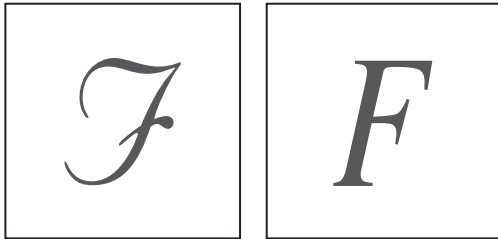
For each font embedded, Adobe products can embed the entire font or just a subset—the unique characters, called glyphs, that are used in the file. Subsetting ensures that your fonts and font metrics are used at print time by creating a custom font name. That way, your version of Adobe Garamond, not your service provider’s version, can always be used by the service provider for viewing and printing. InDesign and Acrobat Distiller allow you to specify a threshold value for subsetting fonts. If the number of glyphs used in a document exceeds the threshold value, the entire font is embedded.

**Note:** If someone without access to the original fonts might do late-stage editing of the PDF document, do not subset fonts. The person will not be able to add a character, such as a question mark, that was not used in the original PDF document.

When Adobe products cannot embed a font, and someone who opens or prints an Adobe PDF file does not have access to the original font, Adobe products temporarily substitute a Multiple Master typeface: either AdobeSerMM for a missing serif font, or AdobeSanMM for a missing sans serif font.

**Note:** If you cannot embed a font and you are attempting to create a PDF/X compliant file, a warning appears. Acrobat Distiller provides these options for handling fonts that cannot be embedded: Warn, Fail, or Continue. Warn indicates that a font is unavailable for embedding. Continue ignores the missing font, substitutes a Multiple Master font, and continues. Fail generates an error in Distiller, and fails the job without creating a PDF file. For all PDF-creation settings related to professional printing, use the Fail option.

The Multiple Master typeface can stretch or condense to fit, to ensure that line and page breaks in the original document are maintained. The substitution cannot always match the shape of the original characters, however, especially if the characters are unconventional ones such as occur in script typefaces. The name of the original font is included in the Adobe PDF file, so that the font will display correctly if the file eventually has access to the font.



*If characters are unconventional (left), the substitution font will not match (right).*

**Note:** Some font manufacturers restrict the embedding of font files. Restrictions apply to copying font software. You are required to comply with applicable copyright law and the terms of your license agreement. For font software licensed from Adobe, your license agreement provides that you may take a copy of the font(s) you have used for a particular file to a commercial printer or other service provider, and the service provider may use the font(s) to process your file, provided the service provider has informed you that it has the right to use that particular software. For other font software, please obtain permission from your vendor.

### Working with CID-encoded fonts in InDesign

CID is not a type of font, such as Type 1, composite, or True Type. Rather, the CID-keyed font file format is a method of encoding glyphs that fall outside the standard ASCII character range, as in Chinese, Japanese, and Korean fonts, or roman fonts with large character sets. If you export an InDesign document with Asian characters to PDF, which preserves the CID-encoded fonts, a PostScript 3 (version 3011.106) RIP is required to output the PDF file. If a PostScript file from InDesign is produced and distilled, Acrobat Distiller converts the CID-encoded fonts to the appropriate equivalent (Type 0 or Type 42, depending on the original Open Type format), thus offering a way to output the PDF file on PostScript Level 2 RIPs. For more information about CID-encoded fonts, see Appendix B, “Resource Guide.”

### Fonts within imported graphics

Acrobat makes it easy to identify and control the embedding of fonts that are used for the text in a document, but remember that EPS graphics can contain fonts as well. To ensure that the text within an EPS graphic does not substitute at print time, make sure the font is available on the computer from which it's being output, or add an invisible (if necessary) character on a document page, formatted with the proper font and with that entire font embedded.

PageMaker has a specific utility to check for this condition. When you print to a PostScript printer, you can have PageMaker search EPS graphics for fonts and check the computer for the corresponding fonts. If a PostScript graphic contains fonts for which there are no corresponding screen fonts on the computer, a dialog box appears indicating the missing font, the graphic's filename, and the page on which the graphic first appears.

To have PageMaker scan PostScript graphics for fonts, use the EPS Font Scanner (Utilities > Plug-ins) and select On. Then print the document. A warning dialog box appears if fonts are missing. If you select Print Anyway and the outline font is available on your printer's hard disk, the correct font will print. However, if the outline font is not available, Courier is substituted for the missing font. You can also select Do Not Print and install the missing fonts on your system before printing again.

**Note:** If the Proof option is selected, no missing fonts warning is given, because the graphics do not print.

In some cases, TrueType fonts that have gone through a PostScript driver can no longer be searched, copied, cut, or pasted. To minimize this problem, use Acrobat on the same system on which the PostScript file was created, and make sure that the TrueType fonts used in the file are available on the system.



## Setting up transparency for successful output

*Transparency* refers to the state of objects that are not 100% opaque, or those that use effects such as blending modes, soft drop shadows, or feathered edges. In Photoshop, Illustrator, and InDesign, you can apply transparency and transparency-based effects to all objects in a file, including text, vectors, gradients, and imported graphics. These effects remain “live” so that when you edit imported type in InDesign, for example, an applied drop shadow changes with the edit. It is not necessary to return to the original application, such as Photoshop, to make simple changes like these. In addition, opacity masks in Illustrator convert to layer masks in Photoshop, and vice versa.

**Note:** *Transparency is not supported in FrameMaker and PageMaker.*

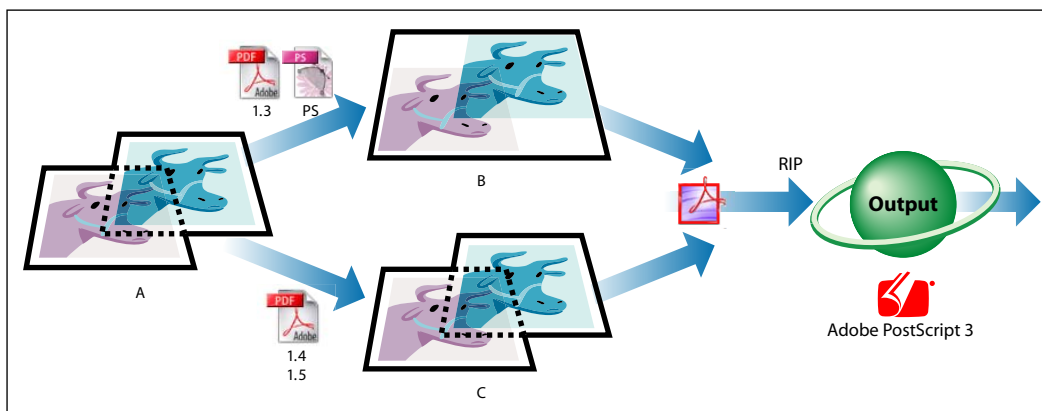
### About transparency flattening

When you save or export files with transparency, you have two choices: Either save the file in a format that preserves the transparency (known as “live transparency”), or save the file in a format that does not, in which case transparent objects (as well as any linked files that interact with transparency) are “flattened.” This is similar to the way Adobe Photoshop requires merging of layers when saving to EPS format.

The process of flattening a file applies the transparency effects and creates new, individual objects that take on the same appearance as the original transparent objects. Flattening can alter characteristics of the original artwork. For example, text can be converted to outlines, or entire regions can be rasterized when they are too complex for the current flattener settings. Because the new objects are constructed differently from the original objects, modifying a flattened object often produces unexpected results and should be avoided. For this reason, it is best to retain live transparency settings until the last possible point in the workflow.

Flattening occurs whenever you print a document with transparent objects to a PostScript file or export to a PDF file format earlier than Adobe PDF 1.4 (Acrobat 5.0). Transparent objects are flattened according to the settings in the Advanced panel of the Adobe PDF Options (Illustrator) or Export PDF (InDesign) dialog box.

**Note:** *PDF files created from Acrobat Distiller never contain live transparency, because Distiller can only convert PostScript to PDF, and the PostScript language cannot accept and process live transparency. A method exists for manually inserting transparency comments into PostScript streams, but this is not recommended for professional printing. For more information, see the Distiller Parameters Guide in the Acrobat Distiller Help menu.*



*Determining when transparency flattening occurs in your workflow*

*A. Transparent source artwork B. Flattened transparent artwork C. Live transparent artwork*

**Note:** *Before you create PDF files for handoff, consult with your service provider about who should flatten the document and when it should be done in the workflow.*

**When to flatten** Flatten transparent artwork when you are positive you need no more changes, or when you are outputting to older printing devices or non-Adobe applications that don't preserve transparency. Acrobat 4.0 uses PDF 1.3 format, which flattens artwork and is compatible with a wide variety of existing printing devices. To flatten artwork in the PDF file you create from Illustrator or InDesign, go to the General panel of the Adobe PDF Options (Illustrator) or Export PDF (InDesign) dialog box and choose Acrobat 4 (PDF 1.3) in the Compatibility menu.

**When not to flatten** Don't flatten artwork when you need to do late-stage edits, when you know your service provider can handle those edits, or when you are outputting to printing devices that can properly flatten transparency or to Adobe applications that preserve transparency. The versions of Acrobat that preserve live, editable transparency are Acrobat 5.0 (PDF 1.4) and Acrobat 6.0 (PDF 1.5). In addition, native formats for Illustrator 9.0 and later preserve transparency and can be used as source files for placement in layouts or other documents.

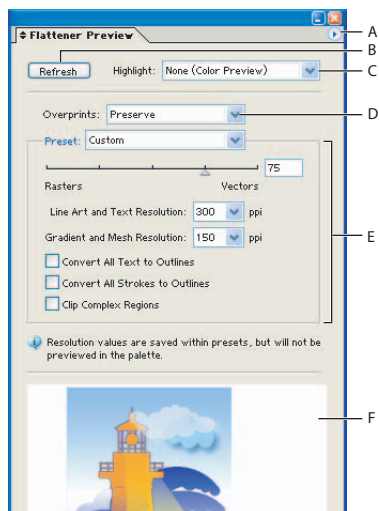
### Previewing transparency flattening (Illustrator and InDesign)

You use the preview options in the Flattener Preview palette to highlight the areas affected by flattening artwork. You can use this information to adjust the flattening options, and even use the palette to save flattener presets. For information on why transparency must be flattened, see "About transparency flattening" on page 11.

Illustrator and InDesign use the same transparency flattener settings, and come with a variety of Flattener Presets, which makes getting good output faster, easier, and more reliable. You may also want to speak with your service provider to ensure that you've selected the proper flattening settings.

#### To preview transparency flattening in Illustrator:

- 1 Choose Window > Flattener Preview to display the Flattener Preview palette.




Flattener Preview palette

A. Palette menu B. Refresh button C. Highlight menu  
D. Overprint menu E. Transparency flattening settings  
F. Preview area

**Note:** The Flattener Preview palette is not intended for precise previewing of spot colors, overprints, and blending modes. Use Overprint Preview mode in Illustrator to preview spot colors, overprints, and blending modes as they will appear when output. For information on previewing how converted spot colors will overprint, see "Previewing how colors will overprint" on page 46.



- 2 Click the triangle  in the upper right corner of the palette, and choose Show Options from the Palette menu, if the full palette isn't visible.
- 3 Choose a preview mode from the Palette menu:
  - Quick Preview computes the quickest preview. This gives you access to all of the options in the Highlight pop-up menu except All Rasterized Regions.
  - Detailed Preview adds the option All Rasterized Regions to the Highlight pop-up menu. This option is more performance-intensive to compute.
- 4 Choose what type of overprinting to use for the preview:
  - Preserve retains overprinting for devices that support it. In most cases, only separations devices support overprinting.
  - Simulate maintains the appearance of overprinting in composite output.
  - Discard ignores any overprint settings that are present in your document. This option can be chosen for both composites and separations.
- 5 Choose a transparency flattening preset from the Preset pop-up menu. (See "Using transparency flattener presets (Illustrator and InDesign)" on page 14.)
- 6 Adjust transparency flattening settings. (See "Transparency flattener options" on page 61.)
- 7 Click Refresh to update the display in the preview area of the palette according to the transparency flattening settings you chose. The areas of the artwork where the selected Highlight option applies are highlighted in color, while the rest of the artwork appears in grayscale.
- 8 Choose areas to highlight from the Highlight pop-up menu. For descriptions of these choices, see "Flattener preview options" on page 62.

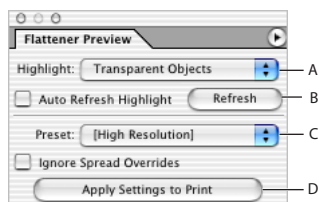
**Note:** The preview highlights only images that are resampled during flattening (not objects such as opaque images that do not interact with transparent objects).

- 9 To magnify the preview, click in the preview area. To zoom out, Alt-click (Windows) or Option-click (Mac OS) in the preview area. To pan the preview, hold down the spacebar and drag in the preview area.

**Note:** The preview does not show how rasterized areas will appear at the specified rasterization resolution, regardless of magnification.

#### To preview transparency flattening in InDesign:

- 1 Choose Window > Output Preview > Flattener to display the Flattener Preview palette.



Flattener Preview palette  
A. Highlight menu B. Refresh options  
C. Preset menu D. Apply Settings to Print button

- 2 Choose areas to highlight from the Highlight pop-up menu. For descriptions of these choices, see "Flattener preview options" on page 62.
- 3 To refresh the preview, do one of the following:

- Select Auto Refresh Highlight to automatically update the display whenever it is out of date and idle.
- Click Refresh to manually update the display.

In both cases, the display is updated in the document window according to the transparency flattening settings you chose.

- 4 To choose a transparency flattening preset for the preview, choose a preset from the Preset pop-up menu. (See “Using transparency flattener presets (Illustrator and InDesign)” on page 14.)
- 5 To ignore flattener presets on individual spreads, select the Ignore Spread Overrides option.
- 6 To apply flattener settings to print output, click the Apply Settings to Print button. The current flattener settings appear the next time you open the Print dialog box.

### Using transparency flattener presets (Illustrator and InDesign)

To streamline the flattening process and ensure consistent results in similar conditions, Illustrator and InDesign include three default *transparency flattener presets*, which control the flattening options. The settings are designed to match the quality and speed of the flattening process with the resolution of the intended output device. You can use a default flattener preset, or create a custom one. (See “Creating and sharing custom flattener presets (Illustrator and InDesign)” on page 15.)

In InDesign, you can apply flattener settings to individual spreads in a document, overriding the flattener preset you’ve set for the entire document or book. This is useful for controlling the flattening quality in documents with a mix of high-resolution images with transparency and low-resolution images without transparency. In this case, you can flatten the complex spread at a high quality, and use a faster and lower-quality flattener preset on the other spreads. At print or export time, you can revert to the flattener settings for the document or book.

**Note:** Acrobat 6.0 Professional uses the same transparency flattening preset values, but does not include named presets.

#### To use transparency flattener presets:

- 1 Open the document in the authoring application.
- 2 In the General panel of the Adobe PDF Options (from the Illustrator File > Save As > Adobe PDF command) or Export PDF (from the InDesign File > Export > Adobe PDF command) dialog box, choose Acrobat 4 (PDF 1.3) in the Compatibility menu.
- 3 Switch to the Advanced panel and choose a flattener preset from the Preset menu. The menu lists the following default presets as well as any custom presets you have added. (See “Creating and sharing custom flattener presets (Illustrator and InDesign)” on page 15.)

**Low Resolution** Use for quick proofs to black-and-white desktop printers.

**Medium Resolution** Use for desktop proofs, and for print-on-demand documents to PostScript color printers.

**High Resolution** Use for final press output, and for high-quality separations-based proofs.

**Note:** The flattening settings are used only if the artwork contains transparency, or if Simulate Overprint is selected in the Advanced panel of the Export PDF dialog box (InDesign).

#### To flatten a spread (InDesign only):

- 1 Display the spread in the Document window.
- 2 Choose Spread Flattening in the Pages palette menu, and then choose any of the following:
  - Default to use the document-flattening preset for this spread.

- None (Ignore Transparency) to ignore transparency for the spread. This is useful for troubleshooting by the service provider.
- Custom to open the Custom Spread Flattener Settings dialog box for specifying settings.

**To ignore the flattener preset on an individual spread (InDesign only):**

Select Ignore Spread Overrides in the Flattener Preview palette or the Advanced panel of the Export PDF dialog box. For information on the Flattener Preview palette, see “Previewing transparency flattening in Acrobat” on page 45.

**Creating and sharing custom flattener presets (Illustrator and InDesign)**

If the presets don’t give you the exact settings you want, you can easily create custom presets. You can then apply these settings when you print or export to PDF 1.3 (Acrobat 4.0), SVG, or EPS formats. You may also want to share custom flattener settings files from your service provider, if this is important to workflow. Flattener presets are stored in an FLST file and have an .flst extension.

***Note:** In Illustrator and InDesign, you can also create custom flattener presets using the Flattener Preview palette. One advantage of using the Flattener Preview palette in Illustrator is that you can immediately test the effectiveness of your preset by previewing it. (See “Previewing transparency flattening in Acrobat” on page 45.)*

**To create or edit a flattener preset:**

- 1 Choose Edit > Transparency Flattener Presets.
- 2 Do one of the following:
  - Click New to create a preset.
  - Select a custom preset in the list, and click Edit.

***Note:** You can’t edit the default flattener presets.*

- 3 Select options, and click OK. (See “Preflighting documents in authoring applications” on page 16.)



*To reset flattener presets, hold down Alt (Windows) or Option (Mac OS) in the dialog box. The Cancel button changes to Reset. Be aware that using Reset in the Transparency Flattener Presets dialog box deletes any custom presets.*

**To export custom flattener presets:**

- 1 Choose Edit > Transparency Flattener Presets.
- 2 Select one or more presets in the list, and click Export (Illustrator) or Save (InDesign).
- 3 Specify a name and location, and then click Save.

**To import custom flattener presets:**

- 1 Choose Edit > Transparency Flattener Presets.
- 2 Click Import (Illustrator) or Load (InDesign).
- 3 Locate and select the file containing the preset you want to load, and then click Open.

**To rename or delete custom flattener presets:**

- 1 Choose Edit > Transparency Flattener Presets.

**2** Do one of the following:

- To rename an existing preset, select a preset in the list, click Edit, type a new name, and then click OK.
- To delete presets, select one or more presets in the list, click Delete, and then click OK to confirm the deletion.

**To create transparency flattening settings for an individual object (Illustrator only):****1** Select the object.**2** Choose Object > Flatten Transparency.**3** Do one of the following:

- Choose a transparency flattener preset from the Preset menu.
- Specify flattening options in the Flatten Transparency dialog box, as described in “Preflighting documents in authoring applications” on page 16.

**4** Click Preview to preview the results of the settings in the document.**5** Do one of the following:

- To use the settings for that object, click OK.
- To save the settings for use with other objects and documents, click Save Preset. Then type a name in the Preset Name (Windows) or Name (Mac OS) text box, click OK to return to the Flatten Transparency dialog box, and click OK again.

## Preflighting documents in authoring applications

*Preflight* is the analysis of a document’s contents to determine its validity for print production and other output. Before creating a PDF file or a PostScript file for conversion to PDF, you must start with a “print-ready” native application file. A print-ready file adheres to your service provider’s specifications for high-end output, and includes the following:

- No RGB images or RGB colors in a four-color process printing job. (RGB images may not separate properly unless color management is on and set up correctly.)
- Links to placed graphics, images, and text elements.
- All font files used in the layout or in a graphic.
- Only high-resolution image data (no 72-ppi images).
- Media-size specification that accommodates bleeds and printer’s marks, if used.
- Correct color modes.
- No unintended spot colors that require additional printing plates.
- No overprinting errors.


Several third-party preflighting tools are available if your application doesn’t offer built-in preflighting, such as the preflighting functionality in InDesign. You can also use a simple checklist to examine the file set in a structured way.

For print production, we recommend asking your service provider which software or method they recommend for preflighting files. This will ensure consistency throughout the production process. Make sure the recommended software opens your native application files, as well as PostScript and PDF files.

## Preflighting documents in InDesign

The InDesign Preflight utility warns of problems that may prevent a document or book from imaging as desired, such as missing files or fonts, and provides information about a document or book, such as the inks it uses, the first page a font appears on, and print settings. You can have the Preflight utility repair incorrect or missing links. For more information on the Preflight utility, see InDesign Help.

### To perform a preflight check for a document or a book (InDesign):

- 1 Do one of the following:
  - For a document, choose File > Preflight.
  - For a book, in the Book palette menu choose Preflight Book or Preflight Selected Documents, depending on whether all, some, or none of the documents are selected in the Book palette. The Preflight dialog box opens with the current book settings.
- 2 Using the Summary section in the Preflight dialog box as a guide, check fonts, links, graphics, and other information. An alert icon  indicates problem areas. The Summary section also displays the page number of any transparent object in a document, or the number of documents with transparent objects in a book.
- 3 To show information for all layers, select Show Data for Hidden Layers on the Summary section. The Preflight utility ignores pasteboard items; however, fonts applied to text on the pasteboard are included in the summary.
- 4 To list only missing or out-of-date fonts, links, or RGB graphics, select Show Problems Only on the Fonts or Links and Images section.
- 5 Click Report at any time to save the current information on each of the preflight sections in a text file, which you can open in a text editor.

## Chapter 2: Creating Print-Ready PDF Files

---

This chapter provides basic step-by-step instructions on how to create PDF files designed for a composite PDF workflow using any of three primary methods for high-end printing: You can save or export directly from an application, print to PDF using the Adobe PDF printer, or generate a PostScript® file and manually distill it using Acrobat Distiller. For each of these methods, you can use a default settings file, or customize the settings to meet your in-house production requirements or those of your service provider.

Which method you use depends on where and why you create the Adobe PDF file, the software and devices that will output the file, and your own preferences. For example, if you want to use Adobe InDesign® to create a PDF file for an online review of a preliminary comp, could create a custom PDF preset in InDesign that includes settings for low-to medium-quality image resolution and no extras like bookmarks. If you are creating a PDF file for high-end output, you should ask your print service provider for a preferred method for PDF creation. We encourage you to experiment with the methods described in this chapter to determine the best one for your needs.

**Note:** Some Adobe PDF settings in each of the file-creation methods are geared toward handling different types of content. If you have specific requirements for your output, it's helpful to understand which methods best address those specific needs. For example, if you need DSC comments to be processed for your high-end print job, you should create your PDF document by distilling a PostScript file. If you want to preserve live transparency within your PDF document, you should create it directly from Illustrator or InDesign.

**Other PDF creation methods** There are several other methods for creating PDF files from Print dialog boxes and Acrobat 6.0. For more information on these methods, see Complete Acrobat 6.0 Help.

- PDFMaker (typically used to convert Microsoft Word and other application files).
- Save As PDF function in an application's Print dialog box.
- Create PDF From File command in Acrobat 6.0.
- Converting different types of files using the Create PDF From Files command in Acrobat 6.0.
- Creating PDF from screen captures.
- Converting paper documents using Acrobat Capture software or the Create PDF From Scanner command in Acrobat 6.0.

### Creating a custom page size

To accommodate printer's marks or bleeds specified in the authoring application, you may need to create a custom page size for your PDF document. In Windows, you can create a custom page size for the Adobe PDF printer, but you cannot name the custom page definition.

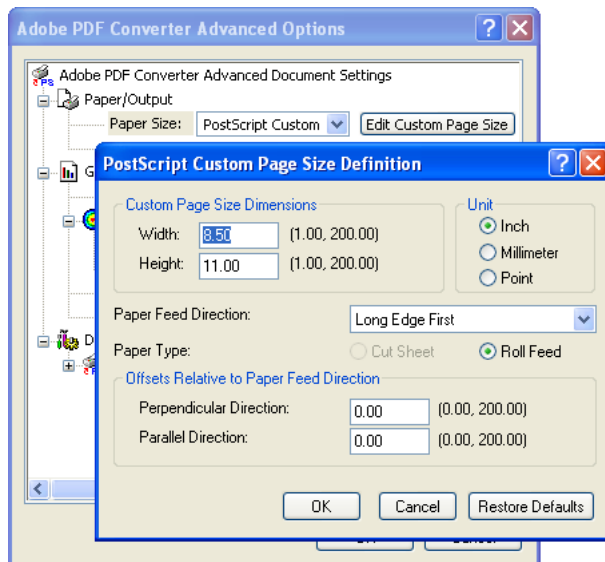
**Note:** Generally, service providers prefer to set printer's marks themselves. Be sure to consult with them about their requirements.

#### To create a custom page size (Windows):

1 Do one of the following:

- Open the Printers or Printer and Faxes window from the Start menu. Right-click the Adobe PDF printer, and choose Printing Preferences. Or choose Properties, and then click Printing Defaults on the Advanced tab or Printing Preferences on the General tab.

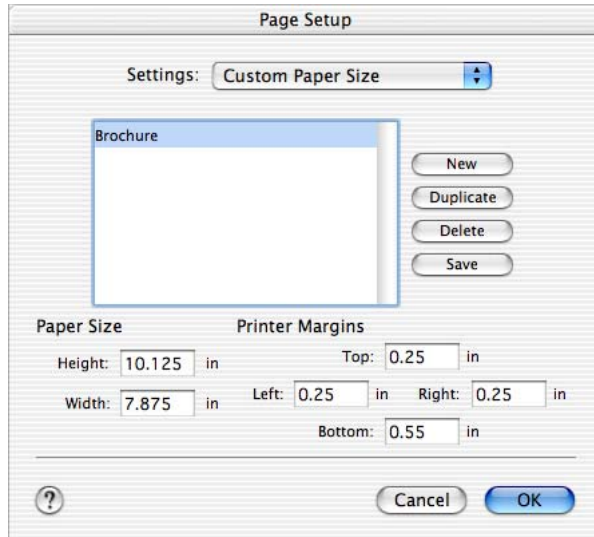
- In an authoring application such as Adobe InDesign, choose File > Print. Select Adobe PDF as the printer and click the Properties button. (In some applications, you may need to click Setup in the Print dialog box to access the list of printers, and then click Properties or Preferences to customize the Adobe PDF settings.)
- 2 Click the Layout tab, and then click Advanced.
- 3 In the Adobe PDF Converter Advanced Options dialog box, expand the Paper/Output option, and select Paper Size.
- 4 Choose PostScript Custom Page Size from the menu.
- 5 Set the width and height, together with any other required options, and click OK.
- 6 To edit the page size definition, click Edit Custom Page. This button is not available until you have defined a custom page size.



*The custom page size that you define becomes the default PostScript custom page size until you change it.*

**To create a custom page size (Mac OS):**

- 1 In Acrobat, choose File > Page Setup.
- 2 Choose Custom Paper Size from the Settings pop-up menu.
- 3 Click New and enter a name for the custom size.
- 4 Set the width and height, together with the margins you need, and click Save.
- 5 Click OK to close the Page Setup dialog box.
- 6 Choose File > Page Setup again and choose the custom size from the Paper Size menu.
- 7 To edit the paper size definition, in the Page Setup dialog box with Custom Paper Size selected in the Settings menu, select the custom paper size and make the necessary changes. Click Save and then click OK.



The custom page size that you define becomes the default PostScript custom page size until you change it.

## Saving and exporting to Adobe PDF

In many Adobe authoring applications, including Photoshop, Illustrator, InDesign, PageMaker, and FrameMaker, you can use the Save As or Export command to create an Adobe PDF file from the current document. In all of those applications except Photoshop, you can choose one of the *PDF presets*, a set of default options for creating PDF files for various types of output. (See “Default Adobe PDF settings files” on page 37.) The commands and dialog box options vary depending on the application.

InDesign, Illustrator, and Photoshop use an internal PDF library to create PDF files. When you use the Save As or Export features from these applications, Distiller is not used. The conversion to PDF is handled within the application.

FrameMaker and PageMaker both convert documents to PDF. This is a PostScript-to-PDF conversion that invokes Distiller through the PDF printer.

You can select a specific Distiller settings file from within the PDF Setup dialog box when exporting or saving as a PDF file. (See “Default Adobe PDF settings files” on page 37.)

### Saving PDF files from Photoshop CS

Use the Save As command to save RGB, indexed-color, CMYK, grayscale, bitmap-mode, CIE L\*a\*b color, and duotone images in Photoshop PDF format. Because Photoshop does not include PDF presets, you may want to follow the traditional method of converting a PostScript file to PDF or printing to the Adobe PDF printer if you don’t want to reset the PDF options every time you create a PDF file. (See “Printing to the Adobe PDF printer” on page 28 or “Creating PostScript files from Photoshop CS” on page 34.)

#### To save a file in Photoshop PDF format:

- 1 Choose File > Save As, type a filename, choose a file location, and choose Photoshop PDF from the Format menu. You can select a Color option if you want to embed a color profile or use the profile specified with the Proof Setup command. Click Save.
- 2 In the PDF Options dialog box, select the options you want, and click OK.

**Encoding** Determines the compression method (Zip or JPEG).



*Note: Bitmap images are automatically encoded using CCITT compression—the PDF Options dialog box does not appear.*

**Save Transparency** Preserves transparency when the file is opened in another application. (Transparency is always preserved when the file is reopened in Photoshop or ImageReady.) This option is not available if the file contains a spot color channel or does not contain transparency.

**Image Interpolation** Anti-aliases the printed appearance of a low-resolution image.

**Downgrade Color Profile** If you selected ICC Profile (Windows) or Embed Color Profile (Mac OS) for a version 4 profile in the Save dialog box, this option downgrades the profile to version 2. Select this option if you plan to open the file in an application that does not support version 4 profiles.

**PDF Security** Specifies security options such as password protection and restricted access to a file's content. Select PDF Security and then click the Security Settings button to open the PDF Security dialog box. Specify the security options that you want and then click OK.

**Include Vector Data** Preserves any vector graphics (such as shapes and type) as resolution-independent objects, ensuring smoother output. When it is selected, you can select the following options:

- **Embed Fonts** ensures that all fonts used in the file are displayed and printed, even on computers that do not have the fonts installed. Bitmap fonts, fonts that don't allow PDF embedding, substitute fonts, type that uses the faux bold style, and warped type cannot be embedded. Selecting Embed Fonts increases the size of the saved file.
- **Use Outlines for Text** saves text as paths. Select this option if embedding fonts results in a file that is too large, if you plan to open the file in an application that cannot read PDF files with embedded fonts, or if a font fails to display or print correctly. Text saved as outlines is not searchable or selectable in a PDF viewer. You can, however, edit the text when you reopen the file in Photoshop.

*Note: The PDF viewer may display a substitute font if both Embed Fonts and Use Outlines for Text are deselected. (See "About font embedding and substitution" on page 9.)*

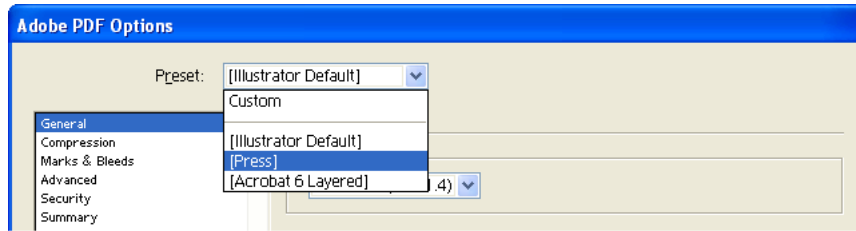
## Saving PDF files from Illustrator CS

Saving directly to PDF from Illustrator gives you more control over the resulting file, because you have the option of preserving Illustrator editing capabilities as well as maintaining live transparency effects and overprint settings.

### To save Illustrator artwork as Adobe PDF:

- 1 In an open document, choose File > Save As.
- 2 Type a filename, and choose a location for the file.
- 3 Choose Adobe PDF (\*.PDF) as the file format, and then click Save.
- 4 Choose the PDF preset you want to use from the Preset pop-up menu in the Adobe PDF Options dialog box.

For descriptions of the default presets, see "Default Adobe PDF settings files" on page 37. For information on how to create custom presets, see "Creating custom Adobe PDF settings files" on page 38, or simply click Save Preset and name the preset before you exit this dialog box.



Choose appropriate PDF settings for the print job.

**5** To view or change existing settings, select a category on the left of the Export PDF dialog box and then customize the options. For descriptions of the options in each category of the dialog box, see Illustrator Help. Consider the following:

- If you chose Acrobat 4 (PDF 1.3) from the Compatibility menu in the General panel, switch to the Advanced panel and choose a transparency flattener preset from the Preset menu. (See “Using transparency flattener presets (Illustrator and InDesign)” on page 14.)
- Select Preserve Illustrator Editing Capabilities to export the file in an Adobe PDF format that allows you to reopen and edit the file in Illustrator.
- In the Advanced panel, select Embed ICC Profiles to embed a color profile into the saved file. The color profile is determined in the Color Settings dialog box (Edit > Color Settings). This color profile is then applied to the file when the file is reopened in Adobe Illustrator.

**Note:** If color management is not selected in the Color Settings dialog box, the Embed ICC Profile option is unavailable.

- In the Summary panel, you can save a summary of all the PDF settings and include it as a text file with the exported PDF file. Summary files can help you diagnose output problems.

**6** Click Save PDF. If you selected View PDF After Saving in the General panel, the PDF document is opened in Adobe Acrobat. Otherwise, the PDF file is placed in the folder you specified.

## Exporting PDF files from InDesign CS

When you export Adobe PDF files from InDesign, you can either use default PDF presets, or create and apply your own custom PDF presets. You can export a document, a book, or selected documents in a book as a single Adobe PDF file from InDesign.

### To export an open InDesign document or book to PDF:

**1** Do one of the following:

- To export a single document, choose File > Export.
- To export a book, choose either Export Book to PDF or Export Selected Documents to PDF in the Book palette menu, depending on whether documents are selected in the Book palette.
- To export selected documents in a book, select a document or documents in the Book palette, and then choose Export Selected Documents to PDF in the palette menu.

**2** Choose a destination folder and type a name for the PDF file in the Export dialog box.

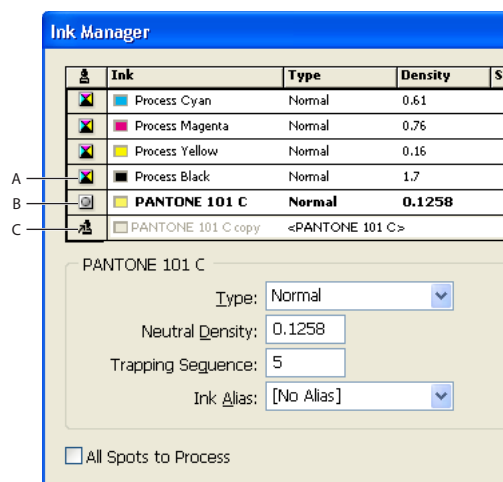
**3** Choose Adobe PDF (\*.PDF) as the file format, and then click Save.

**4** Choose the PDF preset you want to use from the Preset pop-up menu in the Export PDF dialog box.

For descriptions of the default presets, see “Default Adobe PDF settings files” on page 37. For information on how to create custom presets, see “Creating custom Adobe PDF settings files” on page 38, or simply click Save Preset and name the preset before you exit this dialog box.

**5** To view or change existing settings, select a category on the left of the Export PDF dialog box and then customize the options. For descriptions of the options in each category of the dialog box, see InDesign Help. Consider the following:

- If you chose Acrobat 4 (PDF 1.3) from the Compatibility menu in the General panel, switch to the Advanced panel and choose a transparency flattener preset from the Preset menu. (See “Using transparency flattener presets (Illustrator and InDesign)” on page 14.)
- In the Color pop-up menu of the Advanced panel, you can convert all of the original color spaces used in the document to the selected destination color space. Any overprint simulation will be performed in the selected color space.
- In the Summary panel, you can save a summary of all the PDF settings and include it as a text file with the exported PDF file. Summary files can help you diagnose output problems.
- In the Advanced panel, click Ink Manager to include or exclude colors, and to convert spot colors to process equivalents in the PDF file, and to create ink aliases. For details, see InDesign Help.



*Ink Manager A. Process ink B. Spot ink C. Aliased spot ink*

**6** Click Export. If you selected View PDF After Exporting in the General panel, the PDF document is opened in Adobe Acrobat. Otherwise, the PDF file is placed in the folder you specified.

## Exporting PDF files from PageMaker 7.0.1

You control how the content of the PageMaker publication is converted to an Adobe PDF file using the PDF Options dialog box.

### To export an open PageMaker publication to Adobe PDF:

- 1** If desired, combine multiple PageMaker files into a single PDF file by gathering the PageMaker files together using the Utilities > Book command.
- 2** With the document open and named, choose File > Export > Adobe PDF.
- 3** In the PDF Style menu, do one of the following:

- Choose the style appropriate for your workflow. (PDF styles are called “presets” in other Adobe applications.) If you change any settings in the PDF Options dialog box, the PDF Style menu will change to blank. After you have selected settings in the various panels, you can choose Save PDF Style.
  - Ignore the default setting in the PDF Style menu and choose one of the PDF settings files from the Job Name menu in the distiller Settings section of the dialog box. (See “Default Adobe PDF settings files” on page 37.)
- 4 Specify whether you will include all pages in the book, all pages in the current publication, or a range of pages for export.
  - 5 Choose options from the Page Size menu, as follows:
    - Choose Same as Current Publication to set the PDF document paper size to the page size specified in the Document Setup dialog box in PageMaker.
    - Choose Apply Settings of Each Publication when you are converting a book of publications to PDF and not all publications use the same page size in File > Document Setup.
    - Choose Same as Printer Style to use the paper size specified in the printer style you chose in the PDF Options dialog box.
  - 6 Click Export, specify a filename and location, and then click Save.

### **Saving PDF files from FrameMaker 7.1 (Windows and Sun Solaris)**

FrameMaker 7.1 adds new options for creating PDF files and, in UNIX, for preserving CMYK color in the generated PDF files. In addition, FrameMaker 7.1 has been updated to work with Acrobat Distiller 6.0 (Windows) and the improved internal distillation process (UNIX).

You can create PDF files from individual FrameMaker documents, as well as from FrameMaker books. When you generate a PDF version of a book, you can create either a single PDF file for the entire book or separate PDF files for each document in the book. If you specify Adobe PDF settings beforehand, the settings file is available from the PDF Job Options menu in the PDF Setup dialog box. (See “Creating custom Adobe PDF settings files” on page 38.)

***Note:** In FrameMaker 7.1, the names of the standard PDF job options in the PDF Setup dialog box (Windows and UNIX) have changed. As a result of these changes, if you open a document you saved in FrameMaker 7.0 with the old Distiller job option names and choose File > Save as PDF, FrameMaker 7.1 displays an alert indicating that the specified PDF job options file doesn’t exist. For descriptions of the new default settings, see “Default Adobe PDF settings files” on page 37.*

#### **To save a FrameMaker document or book in PDF (Windows and Sun Solaris):**

- 1 Open the document or book you want to convert to PDF. (A book is saved to a single PDF file.)
- 2 If there are references to FrameMaker documents that are in other books, also open the other book files to ensure that links work properly when all the books are converted to PDF.
- 3 To add document information, such as author name or keywords, choose File > File Info, and enter the appropriate information. For more information, see FrameMaker Help.
- 4 In the original document or book file, choose File > Save As (or Save Book As), and choose PDF from the Save As Type pop-up menu.
- 5 Specify the destination folder and filename, change the filename extension to \*.pdf, and then click Save.
- 6 To specify general settings, click the Settings tab, and do any of the following:
  - Choose an option from the PDF Job Options pop-up menu for creating Adobe PDF files. The options include default settings plus any custom job options you created in Acrobat Distiller (Windows), or a text editor (UNIX). For descriptions of the default settings, see “Default Adobe PDF settings files” on page 37.



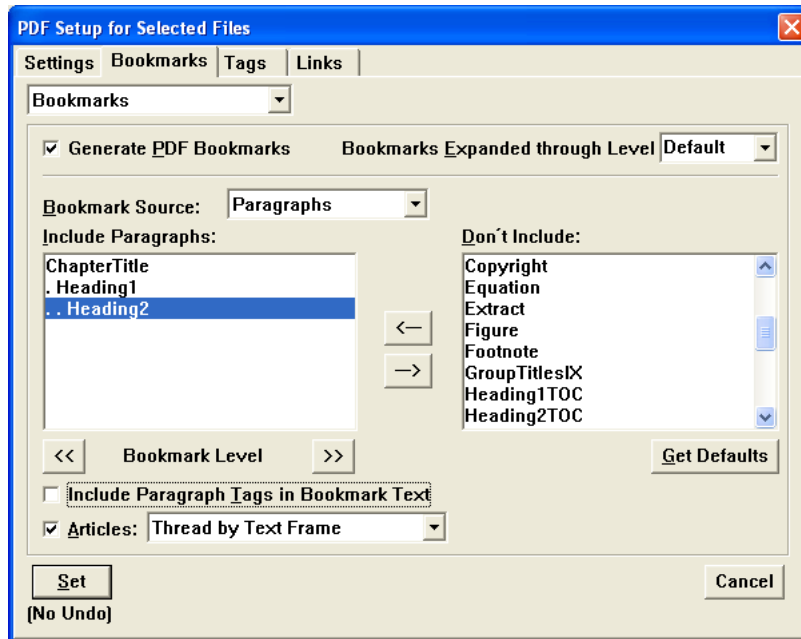
*In a book, the PDF settings saved with the first file are applied to all files in the book. To get the results you want in the exported PDF file, open the first file, choose Format > Document > PDF Setup, adjust the settings, and then click Set.*

- Type an opening page number and choose a zoom level.
- To automatically start Acrobat and open the PDF file, select View Generated PDF in Acrobat. Otherwise, the generated PDF file is placed in the folder you specified.
- (UNIX) To preserve CMYK colors, deselect Convert CMYK Colors to RGB. Deselecting this option overrides the default conversion of CMYK colors to RGB, which might result in better printing quality.
- Choose an option from the Registration Marks pop-up menu. You can choose between Western and Tombo (Japanese) crop marks.
- Specify a default page size. (FrameMaker uses the unit of measure specified using View > Options.)
- Specify the pages to convert to Adobe PDF. You can convert all of the pages in the file, or enter numbers representing a range of pages. You can leave the End Page text box empty to create a range from the page number you enter in the Start Page text box to the end of the file.

**Note:** To ensure that the exported PDF file includes bookmarks, tags, and hypertext links, you must select All for the Page Range.

**7** To include bookmarks, click the Bookmarks tab in the PDF Setup dialog box, select Generate PDF Bookmarks, and then do any of the following:

- Indicate the paragraphs that you want to convert to PDF bookmarks by adding the paragraph tag to the Include Paragraphs list. To move a paragraph from the Don't Include list to the Include Paragraphs list, or vice versa, select the paragraph tag and then click the arrow that points to the other list, or simply double-click the paragraph tag. To move all the paragraph tags from one list to the other, Shift-click the arrow that points to the other list. To omit bookmarks, deselect Generate PDF Bookmarks.
- Change the bookmark levels for the included paragraphs by selecting a paragraph tag and clicking a Bookmark Level arrow. To change the level of all items, Shift-click a Bookmark Level arrow. If the indent for a tag exceeds six levels,  $n>$  precedes the paragraph tag, where  $n$  is the indentation level of the paragraph tag.
- Select Include Paragraph Tags in Bookmark Text to include paragraph tags with the paragraph text in the bookmarks (for example, "CellHeading - Dosage" rather than only "Dosage"). Use this option to check the assigned levels of bookmarks in a draft. (Deselect this option when you print the final document.)



Choose the paragraph tags to include as bookmarks.

8 Select Articles for article threading, and then do one of the following:

- Choose Thread by Column from the pop-up menu to have the reading order of each article reflect how the insertion point moves. This setting is usually the most appropriate in multi-column formats.
- Choose Thread by Text Frame from the pop-up menu to have the reading order of each article go from text frame to text frame. This setting is usually the most appropriate in single column formats.

9 If you intend to add links to the document from other documents, click the Links tab and select Create Named Destinations for All Paragraphs. Selecting this option increases the size of the PDF file.

**Note:** If Links is deselected and you add a link or cross-reference from one FrameMaker document to another, resave both documents as PDF.

10 Click Set to create the PDF file. If you selected View Generated PDF in Acrobat, the PDF is opened in Adobe Acrobat. Otherwise, the PDF file is placed in the folder you specified.

## Saving PDF files from FrameMaker 7.0 (Mac OS)

You can create PDF files from individual FrameMaker documents, as well as from FrameMaker books. When you generate a PDF version of a book, you can create either a single PDF file for the entire book or separate PDF files for each document in the book.

Before you start FrameMaker, make sure that a PostScript printer is installed in the operating system.

### To save a FrameMaker document or book in PDF (Mac OS):

- 1 Open the document or book you want to convert to PDF. (A book is saved to a single PDF file.)
- 2 If there are references to FrameMaker documents that are in other books, also open the other book files to ensure that links work properly when all the books are converted to PDF.

- 3 In the original document or book file, choose File > Save As (or Save Book As), and choose PDF from the Format pop-up menu.
- 4 Change the filename extension to \*.pdf.
- 5 Specify the destination folder and filename, and then click Save.
- 6 To specify general settings, choose Settings from the pop-up menu in the PDF Setup dialog box, and do any of the following:
  - Choose an option from the PDF Job Options pop-up menu for creating Adobe PDF files. The options include default settings plus any custom job options you created in Acrobat Distiller. For descriptions of the default settings, see “Default Adobe PDF settings files” on page 37.

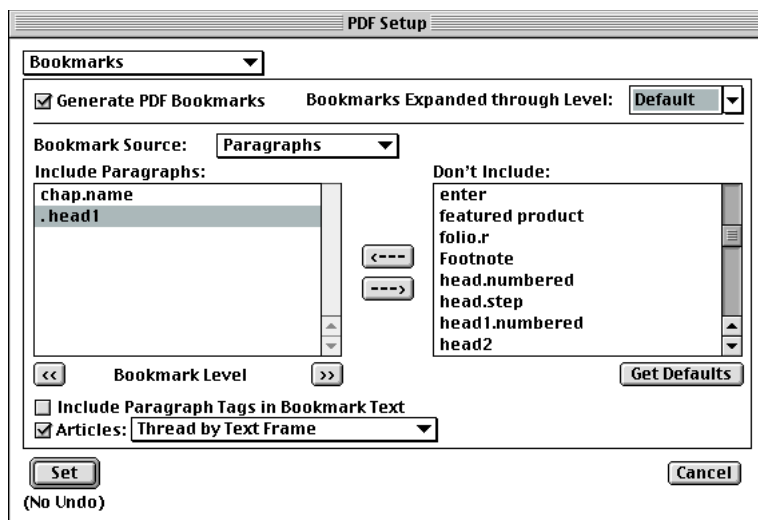


*In a book, the PDF settings saved with the first file are applied to all files in the book. To get the results you want in the exported PDF file, open the first file, choose Format > Document > PDF Setup, adjust the settings, and then click Set.*

- Type an opening page number and choose a zoom level.
- Choose an option from the Registration Marks pop-up menu. You can choose between Western and Tombo (Japanese) crop marks.
- Specify a default page size. (FrameMaker uses the unit of measure specified using View > Options.)
- Specify the pages to convert to Adobe PDF. You can convert all of the pages in the file, or enter numbers representing a range of pages. You can leave the End Page text box empty to create a range from the page number you enter in the Start Page text box to the end of the file.

**Note:** To ensure that the exported PDF file includes bookmarks, tags, and hypertext links, you must select All for the Page Range.

- 7 To control color conversion, do one of the following:
  - To convert CMYK colors to RGB, select the option by the same name. If the color library you’re using has RGB equivalents for CMYK values, those values will be used. If no equivalents are available, FrameMaker calculates the RGB values. You can also control this setting in an Acrobat Distiller PDF job options file. However, the setting in the PDF Setup dialog box takes precedence over the setting in the PDF job options file.
  - To convert CMYK colors to sRGB, CalRGB, or another type of RGB, keep this option unselected and set the values in the Acrobat Distiller PDF job options file.
- 8 To include bookmarks, choose Bookmarks from the pop-up menu in the PDF Setup dialog box, select Generate PDF Bookmarks, and then do any of the following:
  - Indicate the paragraphs that you want to convert to PDF bookmarks by adding the paragraph tag to the Include Paragraphs list. To move a paragraph from the Don’t Include list to the Include Paragraphs list, or vice versa, select the paragraph tag and then click the arrow that points to the other list, or simply double-click the paragraph tag. To move all the paragraph tags from one list to the other, Shift-click the arrow that points to the other list. To omit bookmarks, deselect Generate PDF Bookmarks.
  - Change the bookmark levels for the included paragraphs by selecting a paragraph tag and clicking a Bookmark Level arrow. To change the level of all items, Shift-click a Bookmark Level arrow. If the indent for a tag exceeds six levels,  $n >$  precedes the paragraph tag, where  $n$  is the indentation level of the paragraph tag.
  - Select Include Paragraph Tags in Bookmark Text to include paragraph tags with the paragraph text in the bookmarks (for example, “CellHeading - Dosage” rather than only “Dosage”). Use this option to check the assigned levels of bookmarks in a draft. (Deselect this option when you print the final document.)



Choose the paragraph tags to include as bookmarks.

9 Select Articles for article threading, and then do one of the following:

- Choose Thread by Column from the pop-up menu to have the reading order of each article reflect how the insertion point moves. This setting is usually the most appropriate in multi-column formats.
- Choose Thread by Text Frame from the pop-up menu to have the reading order of each article go from text frame to text frame. This setting is usually the most appropriate in single column formats.

10 If you intend to add links to the document from other documents, choose Links from the pop-up menu and select Create Named Destinations for All Paragraphs. Selecting this option increases the size of the PDF file.

**Note:** If Links is deselected and you add a link or cross-reference from one FrameMaker document to another, resave both documents as PDF.

11 To add document information, such as author name or keywords, choose Document Info, and enter the appropriate information.

12 Click Set to create the PDF file.

## Printing to the Adobe PDF printer

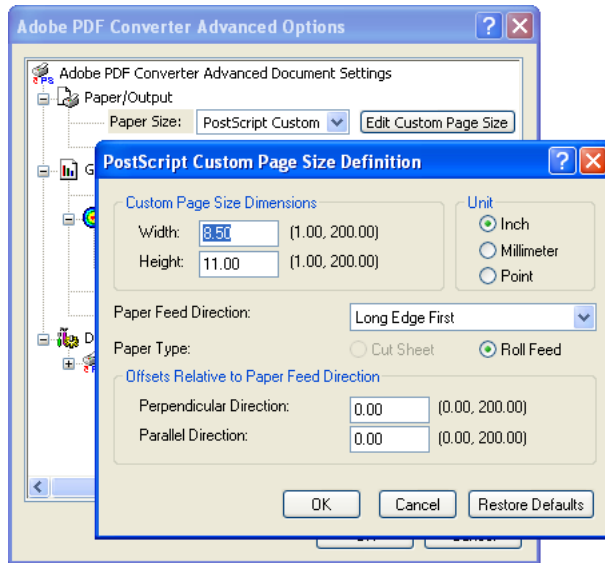
You can create print-ready PDF files from most applications as easily as you print to a desktop printer. The Adobe PDF printer uses Acrobat 6.0 Distiller to create PDF files in the background. Printing a document to the Adobe PDF printer is similar to printing to a PostScript file, only here you “print” to a PDF file.

By default, the last-used Distiller settings file is used to create the PDF file, but you can select a specific Distiller settings file either from within the authoring application or under Properties in the Print dialog box when printing. Before you print to the Adobe PDF printer, you should check the printer preferences.

### Setting Adobe PDF printing preferences (Windows)

The printing preferences apply to all applications that use the Adobe PDF printer, unless you change the settings in an authoring application by using the Page Setup, Document Setup, or Print menus. The dialog box for setting printing preferences is named either Adobe PDF Printing Preferences, Adobe PDF Printing Defaults, or Adobe PDF Document Properties, depending on how you access it.





Setting Preferences for the Adobe PDF printer

**To set Adobe PDF printing preferences:**

**1** Do one of the following to open the dialog box:

- Open the Printers or Printer and Faxes window from the Start menu. Right-click the Adobe PDF printer, and choose Printing Preferences. Or choose Properties, and then click Printing Defaults on the Advanced tab or Printing Preferences on the General tab.
- In the authoring application, choose File > Print. Select Adobe PDF as the printer and click the Properties (or Preferences) button. (In some applications, you may need to click Setup in the Print dialog box to access the list of printers, and then click Properties or Preferences to customize the Adobe PDF settings.)

**2** On the Adobe PDF Settings tab, choose a page size from the Adobe PDF Page Size menu. For information on creating a custom page size, see “Creating a custom page size” on page 18. Any custom page sizes that you have defined are listed on this menu.

**3** To define a custom page size, click the Add Custom Page button. Name your custom page size setting, and enter height and width values for the page. You can specify the page size in inches, millimeters, or points. Click Add/Modify to add the custom page size name to the Adobe PDF Page Size menu.

**4** For Adobe PDF Settings, select a default set of options, or click Edit to view or change the settings in the Adobe PDF Setting dialog box. (See “Recommended Adobe PDF settings for a print production workflow” on page 63 and “Creating custom Adobe PDF settings files” on page 38.)

**5** Set the security for the PDF document in the PDF Security menu. To view or change the security settings, click Edit. For information on setting security options, see Complete Acrobat 6.0 Help.

**6** Select the following options as desired:

- View Adobe PDF Results automatically launches Acrobat and displays the converted document immediately.
- Prompt for Adobe PDF Filename prompts you to name the PDF file and select a location to save it in.
- Add Document Information includes information such as the filename and date and time of creation.

- Do Not Send Fonts to Adobe PDF forces Distiller to use the font resident on the system for embedding. This ensures proper encoding of a font when embedding it into a PDF document. Some applications, however, require that this option be deselected. Deselecting this option causes all fonts used in the document to be added to the PostScript stream during printing.
  - Delete Log Files for Successful Jobs automatically deletes the log files unless the job failed.
  - Ask to Replace Existing PDF File displays a dialog box that warns you when you are about to overwrite an existing PDF file with a file of the same name.
- 7 Set options on the Layout and Paper Quality tabs, as necessary, and then click OK.

### Creating PDF files using the Print command

You can use the Adobe PDF printer as you would any other printer, to create reliable Adobe PDF documents easily from any application that has a Print command. The Adobe PDF printer uses Acrobat Distiller 6.0 to create PDF files. The last used Distiller settings file is used to create the PDF file.

***Note:** In FrameMaker, do not select the Generate Acrobat Data feature, which creates files for online use. If you are interested in this capability, refer to FrameMaker Help.*

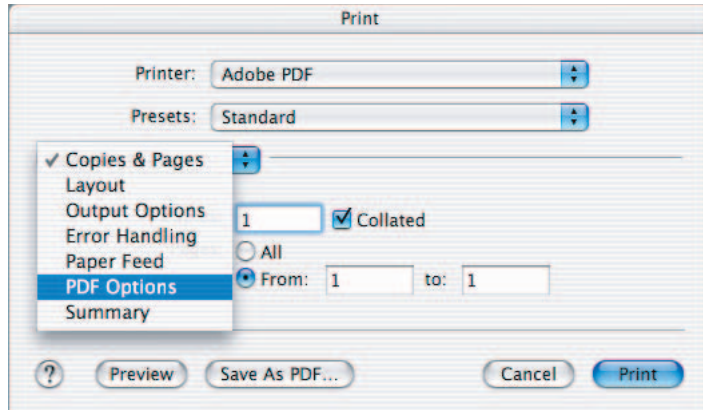
#### To create an Adobe PDF file using the Print command (Windows)

- 1 Set the default printing preferences for the Adobe PDF printer: Choose Start > Settings > Printers (Printers and Faxes in Windows XP). Right-click the Adobe PDF printer, choose Printing Preferences, and then click the Adobe PDF Settings tab. Choose a default setting, or click to specify the settings that are appropriate for the documents you typically create. For information on customizing the Adobe PDF printer settings, see “Setting Adobe PDF printing preferences (Windows)” on page 28.
- 2 Open the file that you want to convert to an Adobe PDF file in its authoring application, and choose File > Print.
- 3 Choose Adobe PDF from the Printer menu.
- 4 From the Print dialog box, click Print.

By default, the PDF file will be saved with the same filename and a .pdf extension in the same folder as the source file.

#### To create an Adobe PDF file using the Print command (Mac OS):

- 1 Select the Adobe PDF settings you want to use in Acrobat Distiller, and then name and save the settings file. You'll see the settings file when you print from the application. For help creating the settings file, see “Creating custom Adobe PDF settings files” on page 38.
- 2 Open the file that you want to convert to an Adobe PDF file in its authoring application, and choose File > Print.
- 3 Choose Adobe PDF from the Printer menu.
- 4 Do one of the following:
  - In Photoshop, select PDF Options from the pop-up menu in the Print dialog box. (By default, Copies & Pages appears in this menu.)



Selecting PDF Options in the Photoshop Print dialog box in Mac OS.

- In Illustrator and InDesign, click Printer at the bottom of the Print dialog box, and then select PDF Options from the pop-up menu.
- 5 From the Adobe PDF Settings menu, choose one of the default settings, or customize the settings using Distiller. Any custom settings that you have defined will be listed. For After PDF Creation, specify whether or not to open the PDF file.
- 6 Click Print.
- 7 Select a name and location, and click Save.

By default, the PDF file is saved with the same filename and a .pdf extension.

## Converting PostScript files to Adobe PDF

Not all authoring applications offer a mechanism for creating Adobe PDF documents directly. In these cases, you can first create a PostScript file and then convert this file to Adobe PDF using Acrobat Distiller. Advanced users often prefer to use this method, which allows you to fine-tune the creation of the PDF file to your needs by inserting Distiller parameters or pdfmark operators into the PostScript file. For information about Distiller parameters and pdfmark operators, see Acrobat Distiller Help.

For information on how to create good PostScript files for distilling, see “Tips for creating good PostScript files for processing later as Adobe PDF” on page 33 (followed by specific directions for creating the files from each application). For information on how to add presets, see “Creating custom Adobe PDF settings files” on page 38.

**Note:** The PostScript language doesn’t support transparency, so all transparent artwork is flattened when the application file is printed to disk. Therefore, to keep the transparency “live” in a PDF file so that it can be edited in the authoring application, you must export from that application and choose PDF 1.4 (Acrobat 5) or PDF 1.5 (Acrobat 6) in the PDF export dialog box rather than using the PostScript method. (See “About transparency flattening” on page 11.)

### Manually distilling PostScript files

From the Acrobat 6 Distiller window you can open PostScript files for conversion to PDF files, and select the Adobe PDF settings to use when converting the documents. For your convenience, you can use one of the default Adobe PDF settings files included with Distiller to create PDF files optimized for a specific medium. Once you become familiar with PDF options, you can customize the settings to change the quality or size of your PDF files.

**To convert a PostScript file to Adobe PDF using Acrobat Distiller:**

- 1 Create a composite PostScript file from your Adobe authoring application. (See “Saving documents as PostScript files for PDF” on page 33.)
- 2 If you have multiple PostScript files, consider combining them into one before distilling. (See “Converting PostScript files to Adobe PDF” on page 31.)
- 3 Double-click the Acrobat Distiller icon to start Distiller. In Acrobat 6.0 Professional (Windows), you can also choose Start > Programs > Acrobat Distiller 6.0.
- 4 In Acrobat Distiller, select an Adobe PDF settings file from the Default Settings menu. The settings are applied to the PostScript file by the Distiller PPD when it converts it to PDF. (See “Default Adobe PDF settings files” on page 37.)
- 5 Choose File > Open to convert the desired PostScript file to Adobe PDF.

**To add custom Adobe PDF settings to the Default Settings menu:**

- 1 In Acrobat Distiller, choose Settings > Add Adobe PDF Settings.
- 2 Double-click the desired PDF settings file. (PDF settings files have the extension .joboptions.) The settings file appears as the selected option in the Default Settings menu.



*You can also drag a PDF settings file to the default settings folder, where it becomes the selected option in the Default Settings menu.*

**Combining multiple PostScript files into one PDF file**

You can convert different types of files, including PostScript files, and combine them into one Adobe PDF file by using the Create PDF From Multiple Files command. Converting PostScript files with embedded fonts has the added benefit of giving the resulting PDF file only one subset for each font. Although this is more efficient than combining several PDF documents with duplicate font subsets, you can also use this command to combine PDF files.

After you have created a composite PDF file, you can add headers and footers, including page numbers, and a background or watermarks to improve the document’s appearance. For details, see Complete Acrobat 6.0 Help.



*If you have combined and converted multiple JPEG files into an Adobe PDF file and you want to retrieve one or more of the JPEG images for editing, you can use the Export function of the Picture Tasks plug-in to export images in JPEG format and open them in an image editing application.*

**To convert multiple files:**

- 1 Choose File > Create PDF > From Multiple Files.
- 2 Do any of the following:
  - Click Browse (Windows) or Choose (Mac OS) to locate the first file to be converted. Double-click the file, or Ctrl-click (Windows) or Command-click (Mac OS) to add multiple files from the same directory.
  - Select Include All Open PDF Documents to automatically add all open PDF files to the list of files to combine.
  - Select Include Most Recent List of Files to Combine to add the files combined the last time the command was used.



*You can add the same file more than once if you need to add blank pages or transition pages between other files, for example.*

- 3 To move a file up or down the file list, select the filename and click Move Up or Move Down as needed. You can also drag files within the list. Files are converted and consolidated in the order shown in this list. To remove a file from the file list, select the filename and click Remove.

- 4 When you have added all the files to be converted and have the files in the desired sequence, click OK to convert and consolidate the files into one Adobe PDF file. Depending on the method used to create the source files, a progress dialog box may show the conversion of the files. Some source applications may launch and close automatically. When the conversion is complete, the consolidated PDF file opens.
- 5 In Acrobat, choose File > Save As, and give the file a unique and intuitive name.

## Saving documents as PostScript files for PDF

The conversion settings you specify when you create the PostScript file (also called a *print file*) are important, because the content in the PostScript files you generate determines the data that appears in your PDF file. In most cases, your service provider determines the settings for their specific needs and supplies an Adobe PDF settings file, also known as a job options file or a preset, that you can load into Distiller. This file automatically configures Acrobat Distiller to meet certain requirements within the workflow. For example, a PDF file for printing should not use JPEG compression for photographic images, so a set of Adobe PDF settings for print will not use JPEG compression on any images in the file.

This section includes guidelines for creating PostScript files, followed by specific directions for creating the files from each application.

### Tips for creating good PostScript files for processing later as Adobe PDF

To create a print-quality PDF file from Acrobat Distiller, you must create good-quality PostScript data by choosing the correct print settings for your document. In Adobe applications, you convert your file to PostScript by printing the file using the Adobe PDF printer. However, Print dialog boxes can vary from application to application. Keep the following guidelines in mind when creating PostScript files:

- Before converting the PostScript file to Adobe PDF, make sure you have discussed this part of the workflow with your service provider. They may want to produce the PDF file rather than having you produce it.
- Check the links to images, and make sure that they are high resolution and updated. Make sure that spot colors are defined only for items intended to be separated as spot colors.
- Load all the fonts used in the document, preferably using a font-management program. Include the fonts used in the document. (See “Including fonts in PostScript files” on page 34.)
- When you create a PostScript file, you have to send the fonts used in the document. To send the fonts, go to the Adobe PDF Printing Preferences dialog box, click the Adobe PDF Settings tab, and deselect the Do Not Send Fonts to “Adobe PDF” option. (See “Printing to the Adobe PDF printer” on page 28.)
- Use PostScript Language Level 3 whenever possible, and if it’s compatible with your service provider’s RIPs.
- Give a PostScript file the same name as the original document, but with the .ps extension. This makes it easy to keep track of the original, PostScript, and PDF versions. The Print to File command in Windows applications uses a .prn extension instead of the .ps extension. Distiller recognizes both .ps and .prn extensions.
- Select the Acrobat Distiller PPD file that comes with Acrobat Distiller 6.0 to make color and custom page sizes available. Choosing a PPD from some other printer may result in PDF documents that do not contain appropriate color, font, or page size information.
- Specify the correct media size to accommodate the page size, including any bleeds and printer’s marks.
- Ask your service provider for an Adobe PDF settings file that meets their requirements for the print job. Then drag the file onto the Acrobat Distiller 6.0 icon to add it to the Default Settings menu in Distiller. You can choose it the next time you open Distiller.

- Eliminate duplicate font subsets by combining multiple PostScript files to produce a single Adobe PDF file. If the PostScript files have embedded font subsets, Distiller gives the resulting PDF file only one subset for each font. This is more efficient than creating a set of several PDF documents with duplicate font subsets. (See Complete Acrobat 6.0 Help.)
- You can create certain folders called *watched folders* for PostScript files that Distiller converts automatically. When Distiller finds a PostScript file in the In folder in one of these watched folders, it converts the file to Adobe PDF and moves the resulting PDF document (and usually the PostScript file and any associated log file) to the Out folder. A watched folder can have its own Adobe PDF settings and security settings that apply to all files processed from that folder. (See Complete Acrobat 6.0 Help.)
- When using FTP to transfer PostScript files between computers, especially if the platforms are different, send the files as 8-bit binary data to avoid converting line feeds to carriage returns or vice versa.

### Including fonts in PostScript files

It's important to include the document's fonts in your PostScript file. Otherwise, they will not appear in your PDF file.

#### To include the fonts when printing to a PostScript file:

- 1 In the authoring application, choose File > Print.
- 2 Select Adobe PDF from the Printer list.
- 3 Do one of the following:
  - (Windows) Click Properties to bring up the Adobe PDF Document Properties dialog box, or Preferences to bring up the Print Preferences dialog box. Click the Adobe PDF Settings tab, deselect Do Not Send Fonts to "Adobe PDF," click OK, and make sure Print to File is selected.
  - (Mac OS) Select Print to PostScript, select the PPD you desire, and then select Add Fonts.
- 4 Click OK.

### Creating PostScript files from Photoshop CS

You use the Print dialog box to convert Photoshop files to PostScript.

#### To create a PostScript file from Photoshop CS:

- 1 Save the document and then choose File > Print.
- 2 Select Print to File and click OK.

### Creating PostScript files from Illustrator CS

If you frequently print Illustrator documents to PostScript for later processing as PDF, you can create a printer preset from your current settings or any you choose to specify. You can also specify settings directly in the Print dialog box without saving.

#### To create a PostScript file from Illustrator for PDF:

- 1 Save the document and then choose File > Print.
- 2 If you don't want to use the default Print dialog box settings, choose a different set of printing options from the Print Preset pop-up menu. For information on print presets, see Illustrator Help.
- 3 Choose Adobe PostScript® File from the Printer menu.

- 4 Choose Adobe PDF (the default) from the PPD menu. This will ensure that any settings for PDF will be selected, and that color graphics won't change to black and white.
- 5 Select any relevant print settings for formatting the document, such as page range, color options, image handling, and printer's marks.
- 6 Click Save.

### Creating PostScript files from InDesign CS

If you frequently print InDesign documents to PostScript for later processing as PDF, you can create a printer preset from your current settings or any you choose to specify. You can also specify settings directly in the Print dialog box without saving.

#### To create a PostScript file from InDesign for PDF:

- 1 Save the document, and then do one of the following:
  - Choose File > Print Presets > Define. In the Print Presets dialog box, choose New. In the New Print Presets dialog box, name the preset.
  - Choose File > Print.
- 2 Choose PostScript® File from the Printer menu.
- 3 Choose Adobe PDF from the PPD menu. This will ensure that any settings for PDF will be selected, and that color graphics won't change to black and white.
- 4 In the General panel, set Copies to One, Pages to All, and leave Reader's Spreads unchecked. Set the remaining options as desired.
- 5 Select any relevant print settings for formatting the document, such as page range, color options, image handling, and printer's marks.
- 6 Click Save.

### Creating PostScript files from PageMaker 7.0.1

If you frequently print PageMaker documents to PostScript for later processing as PDF, you can create a printer style with the settings. You can also specify settings directly in the Print dialog box without saving.

#### To create a PostScript file from PageMaker 7.0.1 for PDF:

- 1 Save the document, and then choose File > Print.
- 2 Choose Adobe PDF as the PostScript printer.
- 3 Choose Acrobat Distiller PPD from the PPD menu.
- 4 Set Copies to One, Pages to All, and leave Reader's Spreads unchecked. Leave the remaining options on the Print Document dialog box set to their default settings.
- 5 Click Paper and do the following:
  - In the Print Paper dialog box, choose Custom from the Size menu and specify dimensions that are 1/4 inch larger than the document's trim size to accommodate bleeds, and then click OK.
  - Set Source to Only One.
  - Leave Printer's Marks unselected; your service provider usually applies printer's marks and bleeds during imposition.

- Leave unselected Page Information and Center Page in Print Area.
- Set Tiling to None and Scale to 100%.
- 6** Click Options and do the following:
  - In the Print Options dialog box, set Send Image Data to Normal to include all image data in the PostScript file. Excessive image data will be downsampled when the PostScript file is converted to PDF in Acrobat Distiller.
  - Set Data Encoding to Send Binary Image Data to create a smaller PostScript file for faster conversion.
  - Set Download Fonts to PostScript and TrueType to include all fonts.
  - Select Write PostScript to File and accept the default name and location, or type a new name in the text box. The default filename changes depending on the type of PostScript file you create. Click Browse (Windows) or Save As (Mac OS) to specify a location for the file created.
  - Select Normal to create a standard .ps file with a description of everything in your publication, including information about linked files.
  - Select other options as desired in the Print Options dialog box.

**Note:** (Mac OS) If PageMaker cannot find all of the fonts to download, it displays an error message once the PostScript file is created.

- 7** Click Color and do the following:
  - In the Print Color dialog box, select Composite to create a single file for conversion to PDF and select Color to preserve color information of objects in the document.
  - Deselect Mirror, Negative, and Preserve EPS Colors.
  - Ignore the settings for Frequency (also known as lpi) and Angle; your service provider will set these options at print time.
- 8** Click Features. In the Print Features dialog box, select the resolution that most closely matches the resolution of the final output device. If necessary, check with your service provider.
- 9** Click Save (Windows) or OK (Mac OS) to create the PostScript file.

## Creating PostScript files from FrameMaker

You can create a single PostScript file from a document or a series of PostScript files from a book, and then combine them later in Acrobat Distiller.

### To create a single PostScript file from a document:

- 1** Choose File > Print.
- 2** Do one of the following, and then click Print:
  - (Windows) Select Print to File and enter the path and filename in the text box, or click Browse to specify a folder and filename.
  - (Mac OS) Choose File from the Destination pop-up menu.
  - (UNIX) Choose PostScript File from the Destination pop-up menu and enter the path and filename in the text box, or click Browse to specify a directory and filename.

### To create a single print file for a book:

- 1** In the book window, choose File > Print Book, or select the documents you want to print and choose File > Print Selected Files.



**2** Do one of the following:

- (Windows) Select Print to File and enter the path and filename in the text box, or click Browse to specify a folder and filename. Choose Single File from the Save Book As (or Save Selected Files As) pop-up menu. Then click Print.
- (Mac OS) Choose File from the Destination pop-up menu, and then click Save.
- (UNIX) Choose Single PostScript File from the Destination pop-up menu and enter the path and filename in the text box, or click Browse to specify a directory and filename. Then click Print.

**To create a series of separate PostScript files for a book:**

**1** In the book window, choose File > Print Book, or select the documents you want to print and choose File > Print Selected Files.

**2** Do one of the following:

- (Windows) Select Print to File and enter the path and filename in the text box, or click Browse to select a folder and type a filename. Choose Single File or Separate File for Each Document from the Save Book As or Save Selected Files As pop-up menu. Then click Print.
- (Mac OS) Choose File from the Destination pop-up menu, and then click Save. Type an asterisk (\*) in the name text box and click Save.
- (UNIX) Choose PostScript File for Each Document from the Destination pop-up menu, and then click Print.

## Default Adobe PDF settings files

Adobe PDF settings, which are customizable, determine the characteristics of the PDF file created. You can choose from several sets of default Adobe PDF settings. (Options may vary depending on the Adobe authoring application.) You should evaluate the default PDF settings with your service provider and decide whether to use those or create a custom set based on their prepress and post-processing requirements.

**Note:** Check your Adobe PDF settings periodically. The applications and utilities that create Adobe PDF files use the last set of Adobe PDF settings defined or selected. The settings do not automatically revert to the default settings.

**To use a default Adobe PDF settings file:****1** Do one of the following:

- Start Acrobat Distiller 6.0.
- In authoring applications or utilities, target the Adobe PDF printer. (See “Printing to the Adobe PDF printer” on page 28.)

**2** Choose from the following options in the Default Settings pop-up menu. Other settings files are available, but they are not appropriate for a print workflow.

**High Quality** Creates PDF files that have higher resolution than the Standard job option file. It downsamples color and grayscale images to 300 ppi and monochrome images to 1200 ppi, prints to a higher image resolution, and preserves the maximum amount of information about the original document. PDF files created with this settings file can be opened in Acrobat 5.0 and Acrobat Reader 5.0 and later.

**Print** (InDesign and FrameMaker 7.1 UNIX only) Creates PDF files that are intended for desktop printers, digital copiers, and CD-ROM publishing; you can also send them to clients as publishing proofs. In this set of options, file size is still important, but it is not the only objective. This set of options uses compression and downsampling to keep a file size down, leaves colors unchanged, subsets all fonts used in the document at 100%, and prints at medium resolution to create a reasonably accurate rendition of the original document.

**PDF/X-1a** Checks incoming PostScript files for PDF/X-1a compliance and only creates a file that is PDF/X-1a compliant. If the file fails compliance checks, Distiller creates a PDF/X.log file that describes the errors in the document. PDF/X-1a is an ISO standard for graphic content exchange. PDF/X-1a requires all fonts to be embedded, the appropriate PDF bounding boxes to be specified, and color to appear as either CMYK, spot colors, or both. PDF/X compliant files must contain information describing the printing condition for which they are prepared. For the PDF/X-1a settings file, the default output condition is US Web Coated (SWOP). PDF files created with this settings file can be opened in Acrobat 4.0 and later. (See “About the PDF/X family of standards” on page 3.)

**PDF/X-3** Checks incoming jobs for PDF/X-3 compliance and only creates a file that is PDF/X-3 compliant. If the file fails compliance checks, Distiller creates a PDF/X.log file that describes the errors in the document. Like PDF/X-1a, PDF/X-3 is an ISO standard for graphic content exchange. The main difference is that PDF/X-3 allows the use of color management and device-independent color in addition to CMYK and spot colors. PDF files created with this settings file can be opened in Acrobat 4.0 and later. (See “About the PDF/X family of standards” on page 3.)

***Note:** For both PDF/X-1a and PDF/X-3, you can modify only those export options that conform to the selected standard. For example, for PDF/X-1a, the Color option is unavailable. For both PDF/X standards, the Compatibility setting in the General panel is Acrobat 4 (PDF 1.3). Any change to the Compatibility setting changes the Standard setting to None.*

**Press/Press Quality** Creates PDF files for high-quality print production (for example, for digital printing or for separations to an imagesetter or platesetter), but does not create files that are PDF/X-compliant. In this case, the quality of the content is the highest consideration. The objective is to maintain all the information in a PDF file that a commercial printer or prepress service provider needs to print the document correctly. This set of options downsamples color and grayscale images to 300 ppi and monochrome images to 1200 ppi, embeds subsets of fonts used in the document (if allowed), and prints a higher image resolution than the Standard settings.

**Standard** Creates PDF files to be printed to desktop printers or digital copiers, published on a CD, or sent to a client as a publishing proof. This set of options uses compression and downsampling to keep the file size down, but also embeds subsets of all (allowed) fonts used in the file, converts all colors to sRGB, and prints to a medium resolution. Note that Windows font subsets are not embedded by default. PDF files created with this settings file can be opened in Acrobat 5.0 and Acrobat Reader® 5.0 and later.

**Acrobat 6 Layered** (Illustrator and InDesign only) Creates PDF files in which all Illustrator and InDesign layers, including hidden layers, are saved as Acrobat layers. This allows Adobe Acrobat 6.0 users to generate multiple versions of a document from a single file. For example, if a document will be published in multiple languages, you can place the text for each language in a different layer. Your printer or print service provider can then show and hide the layers in Acrobat 6 to generate different versions of the document.

**Illustrator Default** (Illustrator only) Create a PDF file in which all Illustrator data is preserved. PDF files created with this preset can be reopened in Illustrator without any loss of data.

## Creating custom Adobe PDF settings files

You may want to create custom conversion settings for certain jobs or output devices. The selections you make determine such things as whether the document fonts are embedded and subsetted at 100%, how graphics and images are compressed and/or sampled, and whether the resulting PDF includes high-end printing information such as OPI comments. We recommend that you work closely with your service provider on the choices you make.

***Note:** Ask your service provider for their custom .joboptions file with the recommended output resolution and other settings. This way, the PDF file you give them will have characteristics optimized for your print workflow.*

**To create custom Adobe PDF settings files:**

**1** Do one of the following:

- Start Acrobat Distiller 6.0.
- In authoring applications or utilities, target the Adobe PDF printer. (See “Printing to the Adobe PDF printer” on page 28.)

**2** Select one of the default sets of options from the Default Settings menu to use as a starting point. Default settings files cannot be modified, but can be duplicated to help create new settings files.

**3** Choose Settings > Edit Adobe PDF Settings.

**4** Change the desired options on the various tabs:

- General options set Adobe PDF file compatibility, default page size (for EPS files), resolution, and other file settings. (See “General settings” on page 64.)
- Images options reduce file size by changing the way images, text, and line art are compressed. (See “Images settings” on page 65.)
- Font options affect font embedding and subsetting. (See “Fonts settings” on page 67.)
- Color options specify how to manage color. (See “Color settings” on page 68.)
- Advanced options set DSC comment processing and other options that affect the conversion from PostScript. (See “Advanced settings” on page 71.)
- PDF/X options create PDF/X-compliant files for more reliable prepress use. (See “PDF/X settings” on page 73.)

**5** Click Save As to save your changes. Enter a unique, descriptive name for the new settings file, and then click Save. The new file is saved as a .joboptions file in the same location as the default files:

**Windows:** C:\Documents and Settings\All Users\Documents\Adobe PDF 6.0\Settings

**Mac OS:** Users/Shared/Adobe PDF 6.0/Settings

**To load custom Adobe PDF settings files:**

Drag the .joboptions file onto the Distiller window or the Distiller icon.

**Note:** Check your Adobe PDF settings before distilling.

# Chapter 3: Inspecting and Fine-Tuning the PDF Document

---

Acrobat 6.0 Professional includes several print-production features to provide you with the control you need for high-quality print output. These include the ability to assess the characteristics and elements of documents, check documents for missing or incompatible elements, preview transparency, color separations, and overprinting to ensure proper printing, soft-proof a document for accurate color output, closely examine any physical portion of a document, and even edit text and graphics within the document. These features allow you to carefully control documents without having to return to the authoring application.



*When you view a PDF document, you can get information on the file, such as the title, the fonts used, and security settings, using the Document Properties dialog box (File > Document Properties). Some of this information is set by the person who created the document, and some is generated by Acrobat. You can change any information that can be set by the document creator, unless the file has been saved with security settings that prevent changes. For details, see Complete Acrobat 6.0 Help.*

## Checking fonts

You can get font information on the current PDF document using any of several Acrobat features:

- The Use Local Fonts option lets you specify whether Acrobat should ignore the fonts installed on your system. When Use Local Fonts is not selected, Acrobat displays the PDF file using substitute fonts for all fonts that are not embedded and subset at 100%. If a font cannot be substituted, the text appears as bullets, and Acrobat displays an error message. If all fonts have been embedded and subset at 100%, they should appear intact, without substitutions.
- The Document Properties dialog box lists information about embedded and substituted fonts. The Fonts panel lists which fonts were used in the original document and whether they were Type 1 or TrueType, and how they were encoded (for example, as MacRoman, Ansi, or CID). If font substitution took place, the Fonts panel also lists the fonts, font types, and encoding(s) used to display the original fonts.
- The Preflight feature can analyze the fonts used in the document and display results of that analysis in the Results dialog box.

**Note:** *If substitute fonts are used and you aren't satisfied with their appearance, you may want to install the original fonts on your system or ask the document creator to re-create the document with the original fonts embedded and subset at 100%. (See "About font embedding and substitution" on page 9.)*

### To check for substituted fonts:

Do one of the following:

- In the Advanced menu of Acrobat, make sure the Use Local Fonts option is deselected.
- Choose File > Document Properties, or choose Document Properties from the document pane menu, which is located just above the vertical scroll bar. Then select Fonts from the left side of the Document Properties dialog box.
- Run a preflight inspection. (See "Preflighting a PDF document" on page 41, and "Viewing preflight results" on page 42.)

## Preflighting documents in Acrobat

It's not enough to preflight the application file. You need to preflight the PDF file itself before you send it to a press or other output device, or before you send it to another user for review. Failure to assess problems up front can result in costly errors during print production.

Acrobat 6.0 Professional includes a robust Preflight feature that checks all the content of a PDF file and provides a detailed report against criteria that you select. Preflighting the PDF file is critical (for both you and the service provider) to ensure that it meets the needs of the print output for which it was intended.

You set up profiles with the criteria that control how a preflight is performed, what is checked, and additional functionality such as reports for you to use. When you run a preflight check, Preflight analyzes the contents of the PDF file to determine its validity against the criteria you choose.

The Acrobat 6.0 Professional Preflight feature:

- Performs over 400 predefined checks for all the common output errors that can come with a designer's file.
- Checks for PDF criteria like PDF/X-1a and PDF/X-3 compliance, as well as PostScript-level compatibility and many other options.
- Creates, edits, loads, and exports customized profiles for distribution to other computers or your customers.

Preflight does *not* correct a document. Minor changes can be made in the PDF document using Acrobat or plug-ins. More complex changes need to be made in the source file.

### Before you preflight

Before you use the Preflight feature or output an Adobe PDF document, make sure that your PDF document meets the following generally recognized output criteria:

- Adobe PDF documents created using Acrobat Distiller, Adobe InDesign, or Adobe Illustrator should be optimized for print or press using the predefined settings in Distiller or InDesign PDF presets, or using settings provided by your print service provider. You can use the Preflight feature to see which PDF settings were used. (See "Default Adobe PDF settings files" on page 37, or see the chapter on creating PDF documents in the Adobe InDesign and Adobe Illustrator user guides.)
- Use CMYK or DeviceN (the Adobe PostScript 3 color space for representing common elements such as duotones, tritones, and quadtones) in a four-color process job. PDF/X prohibits the use of any color other than CMYK and spot colors in documents.
- Embed and subset fonts at 100 percent from within the authoring application. Embedding ensures that the original font is used to output the text, rather than a substituted font.

### Preflighting a PDF document

The process of preflighting a document is made easy and consistent through the use of *profiles*. You can choose a profile in one of several ways, to suit your needs. You can choose one of many predefined profiles. If these profiles don't meet your production requirements, you can define your own from a set of rules for specific jobs. Also, be sure to consult your service provider—they may want you to use a custom profile before you hand off the PDF file for post-processing.

Preflight profiles are created, viewed, and modified in the Preflight: Profiles dialog box (choose Document > Preflight). For details, see Complete Acrobat 6.0 Help.

**Note:** Ask your print service provider for a preflight profile to ensure that all the proper preflight checks are done according to their settings.

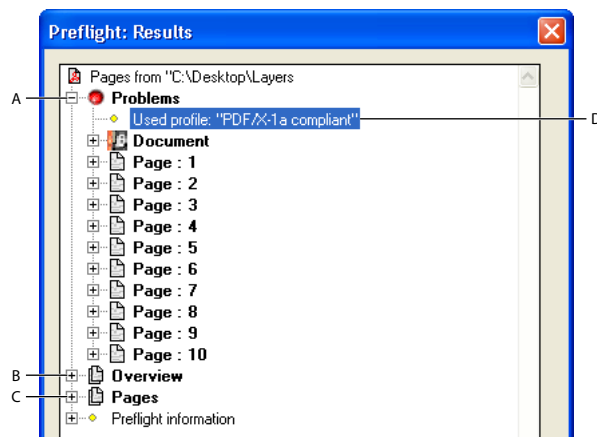
**To preflight a document:**

- 1 In an open Acrobat document, choose Document > Preflight.
- 2 Double-click a profile in the list, or select a profile and then click Analyze.
- 3 After you have reviewed the results of the inspection, click Done.

**Viewing preflight results**

You can view the results of a preflight inspection as a list or individually in the Preflight Results dialog box, and then export as ASCII, XML, or PDF. The results of the inspection are listed hierarchically in three sections:

- Problems, which lists the objects in the Adobe PDF file that have been flagged by a rule in the selected profile. To correct problems, you must use the source application or Acrobat Distiller.
- Overview, which lists the characteristics of the Adobe PDF document, including the color spaces, fonts, patterns, halftone settings, graphic states, and images used. It displays general information about the analyzed document, such as the application used to create it, and the dates it was created and last modified. It also indicates whether the document contains printable annotations (such as notes, forms, hypertext links, or annotations from other vendors) that are set to print. If you don't want the annotations to print, you must change the printing condition in the source application or in Distiller.
- Pages, which verifies that the intended output device supports the document's page sizes and document boxes (media, bleed, trim, and crop boxes). A PDF 1.3 or later document can contain a media, bleed, trim, and crop box. A document intended for commercial printing requires a trim box. The trim box must be smaller than the bleed box and the media box. For more information about PDF document boxes, see Complete Acrobat 6.0 Help.



Results dialog box.

A. Problems B. Overview C. Pages D. Selected profile

**To view document content problems:**

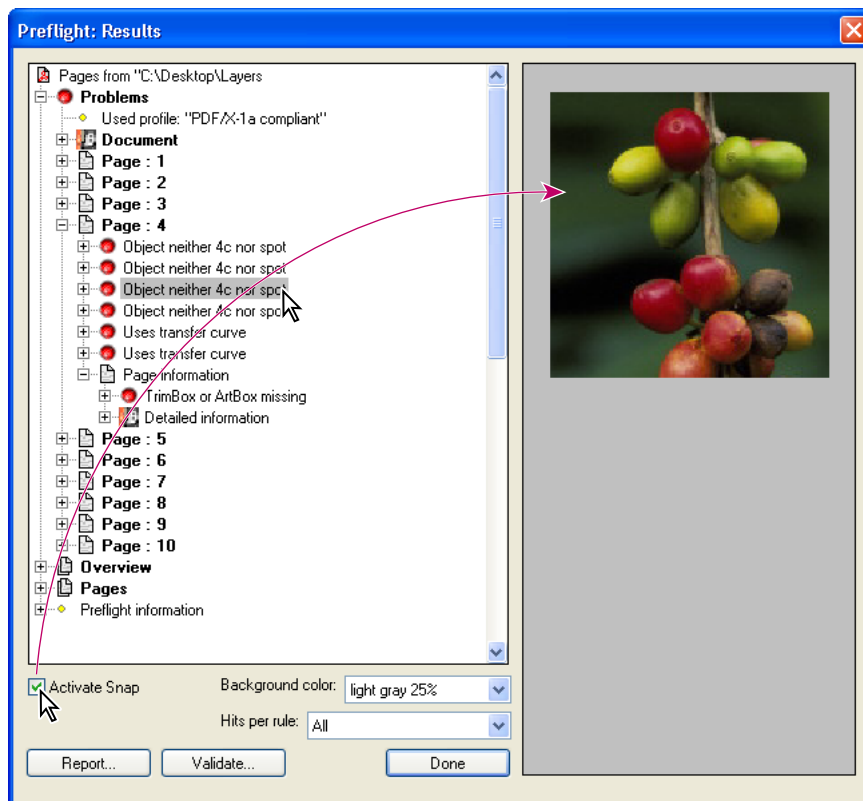
- 1 Run a preflight inspection.
- 2 Use any of the following techniques to review the results:
  - Click the plus sign (+) next to a page number in the Problems section for the list of objects that violated a rule.

- Click the plus sign (+) next to a page number in the Problems section and double-click an item to see the object in context on the PDF page. A red dotted line outlines the object for easier identification. This is useful when an item such as a font exists in multiple places in the document. Using this method, you can find each occurrence of the item. In some cases, the item is an attribute of an object (for example, a color space). In those cases, the preflight feature finds the objects that use the attribute.



Problem object on the PDF page

- Select Activate Snap, and then click an item in the Problems section to view the object in the Preflight Results dialog box. This enables you to isolate an item when you're working with pages containing complex, overlapping areas.



Snap view of problem object

- Select Activate Snap, and then double-click an item in the Problems section to view the object in context on the PDF page as well as in the Preflight Results dialog box.

**Note:** *Activate Snap is disabled for items that cannot be displayed, such as document information fields or page labels.*

- Choose an option from the Hits Per Rule menu to control how many instances of a violation appear in the Preflight Results dialog box. For example, if a document includes two RGB images and you select the profile “List all objects not 4c,” All shows every instance; Only the First shows the first instance.

**To view resources used in the document:**

- 1 In the Results dialog box, click the plus (+) sign next to the Overview section.
- 2 Do either of the following:
  - Click the plus (+) sign next to any of the properties to list the document’s resources.
  - Click the plus (+) sign next to Pages, and then click the plus sign next to individual pages to list resources page by page.

**To view page size information and document boxes:**

- 1 In the Preflight Results dialog box, click the plus (+) sign next to the Pages section.
- 2 Click the plus sign next to a page number, and then click the plus sign next to Page Information to list the results for that page.
- 3 Click the plus sign next to the document boxes to view their dimensions.

## Importing or exporting a preflight profile

Preflight profiles can be shared with other users. For example, print service providers can provide them to their customers to ensure that jobs pass an inspection defined by those profiles before the jobs are handed off. Users in a workgroup can create their own profiles as a way to check a document before uploading to the Web or printing to a special printer.

To share a profile with others in your workgroup, you *package* it for import and export. The package includes all rules and conditions for the selected profile. You can inspect a profile package by selecting it in the Preflight dialog box, but you can’t modify it.

**To import a preflight profile:**

- 1 In the Preflight dialog box, select a profile, and click Import.
- 2 Locate the preflight package file (.kfp) and click Open.

The profile appears in the Preflight Profiles list with the word *[Package]* appended to it.

**To export a preflight profile:**

- 1 In the Preflight dialog box, select a profile, and click Export.
- 2 Specify a name and location for the package, and click Save.

## Using Acrobat previewing features

A combination of new and expanded Preview features let you quickly see potential print problems in an Adobe PDF file, saving time, reducing costs, and resulting in fewer late-stage errors.



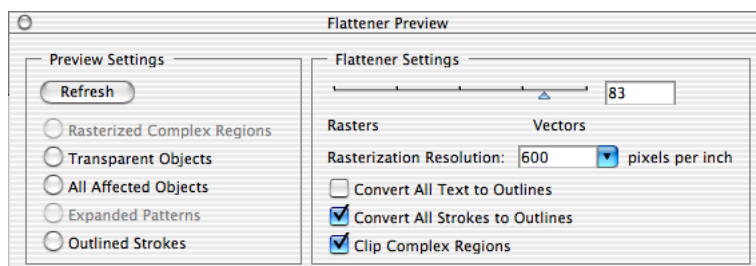
## Previewing transparency flattening in Acrobat

The Transparency Flattener Preview palette allows you to detect objects in a PDF document that are transparent, and objects that will be affected by transparency flattening. Transparent content is highlighted in red. (For information on why transparency must be flattened, see “About transparency flattening” on page 11.) While Acrobat 6.0 Professional shares flattener preview capabilities with Illustrator CS and InDesign CS, it does not include the option to create custom presets.

Use the Transparency Flattener Preview palette to determine which areas will be affected by transparency. You may also want to consult with your service provider to ensure that you’ve selected the proper flattening settings.

### To preview transparency flattening:

- 1 Choose Advanced > Transparency Flattener Preview.



*The Flattener Preview palette lets you see the interactions of specified transparent areas and adjust the options for output.*

- 2 Click Refresh to populate the text boxes with the current transparency flattening settings.
- 3 Select preview settings.
- 4 To magnify the preview, click in the preview area. To pan the preview, press the spacebar and drag.
- 5 Drag the Rasters/Vectors slider or enter a value to specify the degree of rasterization in complex areas of the artwork.
- 6 Specify a rasterization resolution for rasterizing complex areas.
- 7 Select additional flattening settings. (See “Transparency flattener options” on page 61)
- 8 Click Refresh to show the new settings.

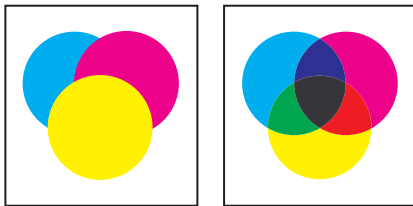
**Note:** To actually flatten a PDF file for output in Acrobat, click Advanced in the Print dialog box, select Transparency Flattening on the left, and specify the desired options. (See “Transparency flattener options” on page 61.)

## Previewing how colors will overprint

Overprint Preview mode provides an on-screen simulation that approximates how blending and overprinting will appear in color-separated output. Overprinting effects can also be simulated when you output to a composite printing device. Both of these methods are useful for proofing documents that will be color-separated.

If you are previewing spot colors that have been converted to process colors, consider the following:

- Adobe applications offer many interfaces for converting spot colors to process colors, including the InDesign Ink Manager, InDesign Print dialog box, Illustrator Swatches palette, and the Acrobat Advanced Print dialog box. When converting spot colors to their process-color equivalents, it is imperative to understand the impact on overprinting behavior. In some cases, converting a spot color to a process color will cause overprinting to “disappear,” or cause the appearance of the overprint to be lost.
- PostScript and PDF overprinting rules state that individual channels in CMYK colors cannot overprint unless their value is Zero. This is known as “nonzero overprinting.” For example, if a spot color conversion resulted in CMYK equivalents of 5% Cyan, 5% Yellow, 100% Magenta, and 10% black, any overprinting objects using this color will no longer overprint after the spot color is converted to process.
- Conversely, if a spot-to-process conversion resulted in CMYK values that were 0% Cyan, 10% Yellow, 100% Magenta, and 10% black, the Cyan channel will overprint, but none of the other colorants will overprint.
- This type of nonzero overprinting conversion can result in a change in appearance of the final output. It is important to simulate all spot color to process color conversions using Acrobat 6.0 professional to accurately predict the result of the conversions.



*Appearance of artwork on monitor (left) and printed artwork (right)*

### To preview how colors will overprint and blend:

With the PDF file open, choose Advanced > Overprint Preview to turn the overprint display on and off. When overprint previewing is on, a checkmark appears next to the Overprint Preview command.

## Previewing color separations

Separation Preview lets you easily preview the process and spot color separations in an Adobe PDF document. You can turn the color plates for the current page on or off in any combination, quickly preview the effect of changing spot colors to process color equivalents, and view spot and process ink coverage percentages in a specific area by simply placing the cursor over that area. When you turn off colors in a color separations preview, the results are shown in the main window.

When viewing multiple colors, the separations are shown as their respective colors; when viewing them individually, the separations appear in grayscale. Displaying color separations does not change the file itself or the output, only the separation preview.


### To preview color separations:

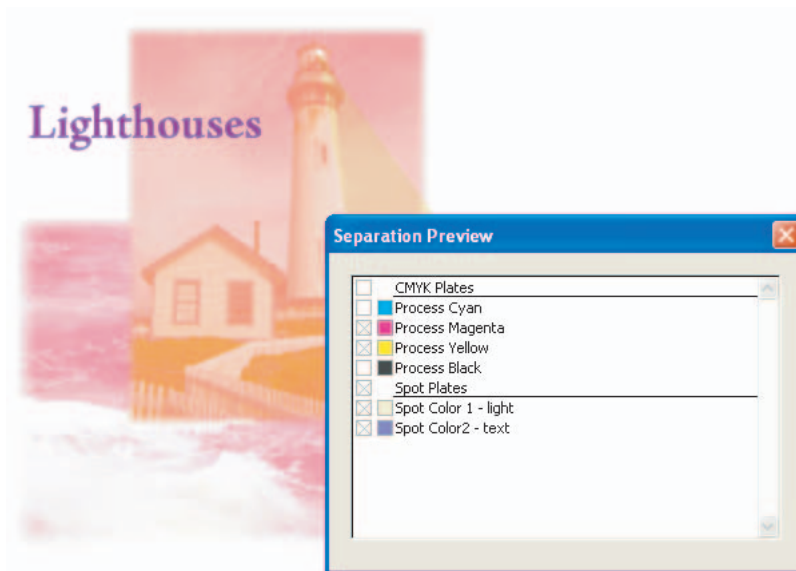
- 1 Display the page you want to preview.

2 Choose Advanced > Separation Preview.

3 Do any of the following:

- Move the mouse around on the page to view the ink values that Acrobat will use for the separations at any given point on the page. These ink values are based on the current working space and proof setup profiles.
- To display a separation, select the color name. Or, to display all process colors at once, select CMYK (Windows) or CMYK Plates (Mac OS).
- To omit a separation, deselect the color name.

4 To convert a spot color to process, select the color until the process color icon  appears. This conversion is for previewing only; it does not affect output.



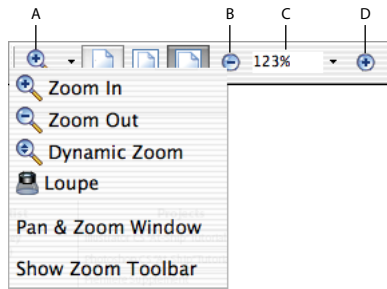
*Color Separation Preview with cyan and black turned off*

## Using Acrobat magnification tools

The toolbar and status bar offer several methods for magnifying the view of PDF documents:

- The Zoom In and Zoom Out tools let you change the document's magnification in the single window view or in each window using the Split Window view.
- The Dynamic Zoom tool lets you zoom in or out by dragging the mouse up or down.
- The Pan & Zoom Window tool lets you use a small window to adjust the magnification and position of the view area, similar to using a page thumbnail or the Navigator palette in Photoshop and Illustrator.
- The Loupe tool lets you view a magnified portion of a PDF document in a small window.

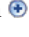




The maximum zoom factor for these tools has been increased to 6400%, which allows you to closely examine such things as images, hairlines, overprints, and object-level traps in the PDF document.



Magnification options on toolbar  
A. Zoom menu B. Zoom Out button  
C. Magnification percentage D. Zoom In button

#### To increase or decrease magnification:


Do one of the following:

- Click the Zoom In button  or Zoom Out button  in the toolbar, or select a magnification percentage from the toolbar menu.
- From the Zoom menu in the toolbar, choose the Zoom In tool  or Zoom Out tool , and then click the page. To zoom in on a specific area, use the Zoom In tool to draw a rectangle. When you're finished zooming, you may want to select the Hand tool, so you don't accidentally keep zooming the next time you click.
- Click the magnification percentage area in the toolbar, type a new percentage, and press Enter or Return.
- From the Zoom menu in the toolbar, select the Dynamic Zoom tool , and then drag up to zoom in to the area where you begin dragging, or drag down to zoom out from that location. If your mouse has a mouse wheel, you can roll it forward to zoom in, or backward to zoom out.




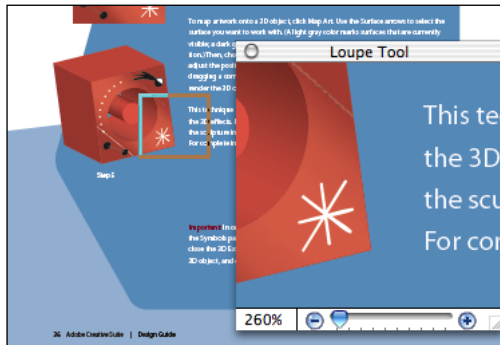
When the Zoom In tool is selected, you can hold down Alt (Windows) or Option (Mac OS) while clicking or dragging to zoom out. When the Zoom Out tool is selected, hold down Ctrl or Option to zoom in. With either zoom tool, hold down Shift to use the Dynamic Zoom tool.

#### To change the magnification using the Pan & Zoom Window:

- 1 Choose Tools > Zoom > Pan & Zoom Window, or select the Pan & Zoom Window tool  from the Zoom menu in the toolbar.
- 2 Do any of the following:
  - Drag the handles of the box within the Pan & Zoom window to change the document magnification.
  - Drag the center of the box to pan across the area you want to see.
  - Click the navigation buttons to move to a different page.

#### To change the magnification level using the Loupe tool:

- 1 Choose Tools > Zoom > Loupe, or select the Loupe tool  from the Zoom menu in the toolbar.
- 2 Click the area of the document you want to view in closer detail.
- 3 Drag the slider in the Loupe Tool window to determine the magnification level.



You can magnify up to 6400% with the Loupe tool.

## Soft proofing PDF documents

*Soft proofing* uses a computer monitor to represent the final printed piece. With the Acrobat built-in support for ICC color management and the Adobe standard implementation of color management across all of its professional publishing applications, soft proofing has become more reliable in Acrobat. Using the Acrobat proofing features, you can view color on-screen consistently across applications and simulate various CMYK printing conditions on-screen.

Acrobat shares identical proofing tools (Proof Setup and Proof Colors) with Photoshop, Illustrator, and InDesign. You can use these tools to determine how your on-screen (RGB) colors will look when printed (CMYK). Proof Setup lets you simulate CMYK conditions on your monitor, using either predefined or custom output profiles.

### To set up proofing conditions:

- 1 Use a high-quality color monitor that has been accurately calibrated and profiled.
- 2 View soft proofs in muted, consistent lighting conditions, including no glare on glass, a hood over the monitor, a neutral gray on-screen desktop, and neutral-colored paint on surrounding walls.
- 3 In Acrobat, choose Advanced > Proof Setup > Custom.

From the Proofing Space menu, choose a profile for the specific paper you're printing on. The output profiles include predefined proofing devices and printing options (which are shared with Photoshop, Illustrator, and InDesign), as well as any custom output profiles (which are stored in the System\Color folder in Windows, or the Mac HD/Library/Application Support/Adobe/Color/Profiles folder in Mac OS).

- 4 Do one of the following:
  - Select Simulate Ink Black for a more accurate depiction of how true black will print by turning off black-point compensation. This setting compares the white points of the CMYK proof space to the RGB monitor space and shifts all colors accordingly. Use this setting when you print to newsprint or to desktop inkjet proofers.
  - Select Simulate Paper White for a more accurate depiction of the entire gamut of the print medium. Taking the selected destination profile into account, this setting detects the white point, which is the brightest point in the image, then calculates and displays the printable color range according to that destination profile. Use this setting to obtain the most accurate preview of the printed output. To enable your eye to adapt to the simulated white condition, hide other white or near-white elements on-screen, such as user interface environments in programs.

## Editing text, images, and graphic objects


The TouchUp editing features in Acrobat let you make late-stage edits and modifications to text as well as graphics. For major revisions, however, and as a general rule, it's best to make changes in the authoring application and then re-create the PDF file. This allows for consistency (and therefore saves time in the long run) by ensuring that your changes will be made available to any other versions you may create down the road, rather than just being added into the secondary documents of final production. It also gives you access to your accustomed editorial tools.

**Note:** Comments—even though they have a graphic appearance—are not considered page elements, and therefore cannot be selected or manipulated using the TouchUp tools.


### Editing text with the TouchUp Text tool

You use the TouchUp Text tool to make corrections to text in a PDF document. You can edit text and change text attributes such as spacing, point size, and color. You can even add a new block of text to your document. To edit text assigned a particular typeface, the font must be embedded and subset at 100%, or you must have a licensed copy of the appropriate font installed on your system.

#### To edit text using the TouchUp Text tool:

- 1 Choose Tools > Advanced Editing > TouchUp Text Tool, or select the TouchUp Text tool  on the Advanced Editing toolbar.
- 2 Click in the text you want to edit. A bounding box outlines the selectable text.
- 3 To select text, do one of the following:
  - Choose Edit > Select All to select all the text in the bounding box.
  - Drag to select characters, spaces, words, or a line.
- 4 To edit, copy, delete, or add text to a text selection, do one of the following:
  - Enter new text to replace the selected text.
  - Press Backspace or Delete, or Choose Edit > Cut to remove the text.
  - Choose Edit > Copy to copy the selected text.
  - Click anywhere outside the selection to remove the highlighting and start over.

#### To edit the text attributes:


- 1 Choose Tools > Advanced Editing > TouchUp Text Tool, or select the TouchUp Text tool  on the Advanced Editing toolbar.
- 2 Click in the text whose attributes you want to edit.

A paragraph of text is enclosed in a bounding box. You can select text within the paragraph by dragging.
- 3 To open the TouchUp Properties dialog box, right-click (Windows) or Control-click (Mac OS) and choose Properties.
- 4 In the TouchUp Properties dialog box, select the Text tab. Make selections for any of the following attributes, and then click Close:
  - Select a font from the Font menu. You can select any font installed on your system or any font that has been embedded and subset at 100% in the PDF document. Document fonts are listed above the line; system fonts are listed below the line. For more information about accessing and embedding fonts, see Complete Acrobat 6.0 Help.
  - Enter a font size.

- Specify a Character Spacing value to insert uniform spacing between more than two characters in selected text.
- Specify a Word Spacing value to insert uniform spacing between two or more words in selected text.
- Specify a Horizontal Scaling value to control the proportion between the height and the width of the type.
- Enter a Baseline Offset value to offset the text from the baseline. The *baseline* is the line on which the type rests.
- Click Fill or Stroke to choose a new color from the palette.
- Enter a value in the Stroke Width box.

**Note:** For legal reasons, you must have purchased a font and have it installed on your system to be able to revise text using that font.


**To add new text to a document:**

- 1 Choose Tools > Advanced Editing > TouchUp Text Tool, or select the TouchUp Text tool  on the Advanced Editing toolbar.
- 2 Ctrl-click (Windows) or Option-click (Mac OS) to open the New Text Font dialog box.
- 3 Select the font and writing mode to use (horizontal or vertical), and click OK. A frame of placeholder text appears.
- 4 Enter the new text.

## Editing images and objects with the TouchUp Object tool


You use the TouchUp Object tool to make late-stage corrections to images and objects in an Adobe PDF document, without launching an external editing application.

**To edit an image or object with the TouchUp Object tool:**

- 1 Choose Tools > Advanced Editing > TouchUp Object Tool, or select the TouchUp Object tool  on the Advanced Editing toolbar.
- 2 Select the image or object, and then right-click (Windows) or Control-click (Mac OS) and choose one of the commands.


**Note:** Delete Clip deletes objects that are clipping the selected object. For example, if you scale text and the resulting characters are clipped, selecting this option shows you the complete characters.

**To move an image or object:**

- 1 Choose Tools > Advanced Editing > TouchUp Object Tool, or select the TouchUp Object tool  in the Advanced Editing toolbar.
- 2 Select the image or object, and drag it to the desired location. Release the mouse button to place the image or object.

**Note:** If you edit a text box, the entire text box is selected. The TouchUp Object tool cannot select individual characters that are part of larger text blocks. You need to use the TouchUp Text tool to edit individual characters and words. (See “Editing text with the TouchUp Text tool” on page 50.)


## Editing images or objects with an external editing application

Using the TouchUp Object tool , you can select an image or object in a PDF document and take it into Adobe Photoshop, Adobe Illustrator, or another application directly from the PDF document, and edit it. Once you complete the edit, you can place the image or object directly back in the PDF document and view the newly edited object in its original context. To take full advantage of this tool, you should have prior experience using the external editing applications accessed by the TouchUp Object tool.

You set the preferred external editing applications in the TouchUp preferences. (See “Setting the TouchUp preferences” on page 53.)

**Note:** If you choose Photoshop as the image editing application for the TouchUp Object tool, all image data—regardless of the original color space of the placed graphic—is converted to either CMYK, RGB, gray, or 1-bit monochrome.

### To edit an image or object in an external editing application:

- 1 Choose Tools > Advanced Editing > TouchUp Object Tool, or select the TouchUp Object tool  in the Advanced Editing toolbar.
- 2 Select the image or object, and then right-click (Windows) or Control-click (Mac OS) and choose Edit Image, Object, Objects, or Page, depending on what is currently selected. The Edit Page option is shown if nothing is selected on the page.

**Note:** If you edit an image, object, or page in an outside application, and the page contains transparency or logical structure, the page may look different in your editing application. Furthermore, the appearance of the page may change in unexpected ways after the object or page is edited because PDF tags have been removed. Removal of these tags also affects the behavior of the page for accessibility, reflow, and saving in different formats.

If your specified external editing application is Photoshop, and your specified image cannot be opened in Photoshop, verify that Photoshop is configured correctly. If you receive a message asking whether to convert to ICC profiles, choose Don't Convert. If the image window displays a checkerboard pattern when it opens, the image data could not be read.

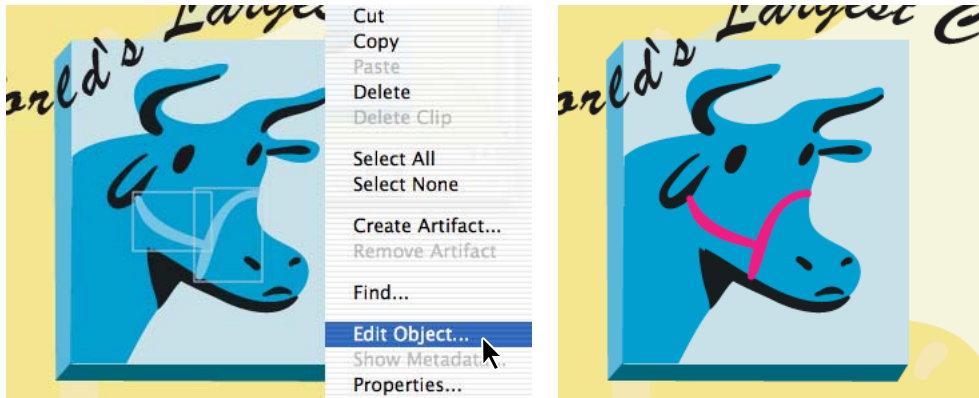
Editing in Photoshop and Illustrator from within Acrobat is a modal feature—if you change the object selection, the editing session is terminated. Any subsequent changes in the external editor (after the session is terminated), even if saved, are not placed into the PDF document by Acrobat. For this reason, if a session is terminated, you should start a new session before continuing to make changes to the object.

- 3 Make the desired changes in the external editing application. If you are working in Photoshop, you must flatten the image. Images must be flattened to be saved in Photoshop PDF format.

If you change the dimensions of the image in Photoshop, the image returns to its place in the PDF document, but the alignment may be different from before it was edited. Also, transparency information is preserved only for masks specified as index values in an indexed color space. Image masks are not supported. Lastly, if you change image modes while editing the image, you may lose valuable information that can only be applied in the original mode.

- 4 In your external editing application, choose File > Save. The graphic object is automatically updated and displayed in the PDF document when you bring Acrobat to the foreground.





*Edit placed objects in the authoring application*

### Setting the TouchUp preferences

The TouchUp preferences define the default applications used as the image and object editors when art and graphics are selected using the TouchUp Object tool.

#### To set the TouchUp preferences:

- 1 Choose Edit > Preferences (Windows) or Acrobat > Preferences (Mac OS). You can also choose Preferences from the document pane menu above the vertical scroll bar.
- 2 Select TouchUp on the left side of the Preferences dialog box.
- 3 Select Choose Image Editor, and choose an image editor.
- 4 Select Choose Page/Object Editor, and choose a page or object editor.

### Optimizing your PDF documents for print

There are many opportunities for optimizing your Adobe PDF files. Which ones you use depends on how you intend to use the file and on the essential properties it must have to fulfill those functions. In most cases, the default settings are appropriate for maximum efficiency. To streamline printing, you may want to remove unneeded fonts, comments, and interactive elements. Additionally, PDF Optimizer can be used to save files into older versions. For example, you can convert a PDF 1.5 (Acrobat 6.0) file into a file that can be opened by Acrobat 4.0. For other ways to use PDF Optimizer, see Complete Acrobat 6.0 Help.

**Note:** The PDF Optimizer cannot flatten transparency effects contained in the document's artwork. To flatten transparency, and thus reduce file size, generate a PostScript file, EPS, or PDF 1.3 version of the original document, or flatten the artwork using Adobe Illustrator, Adobe Photoshop, or Adobe InDesign.

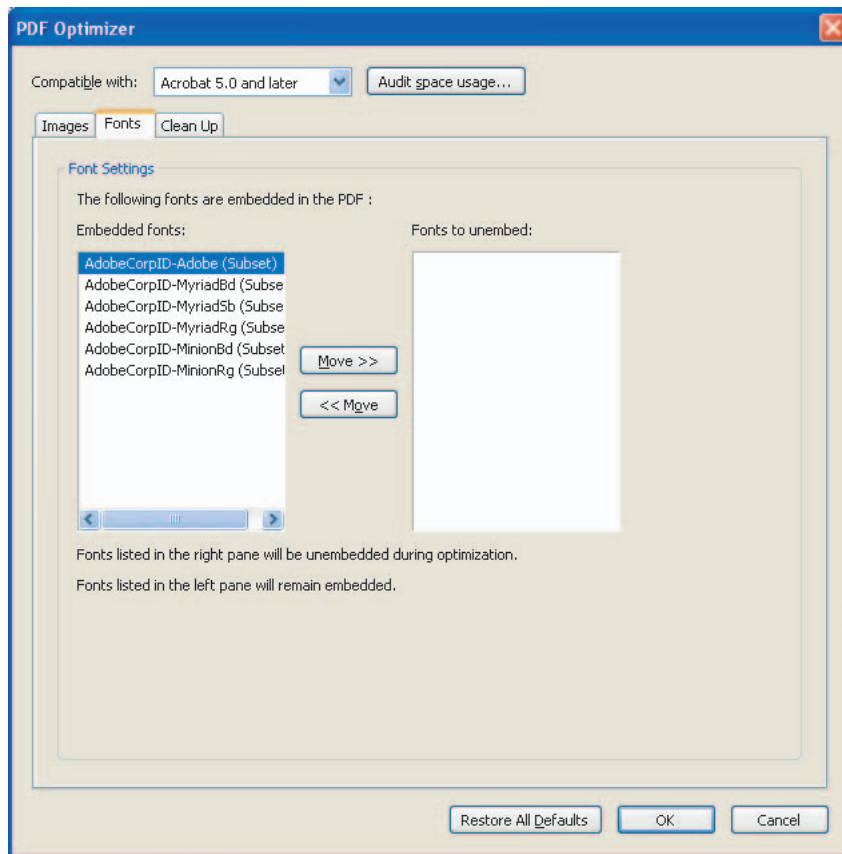
### Optimizing fonts

You can slightly reduce the size of a PDF document by removing unneeded fonts from the document. This is a handy way to see a list of fonts that are embedded in a PDF file; it's also useful for removing fonts that are causing problems in your production processes.

#### To optimize fonts:

- 1 Choose Advanced > PDF Optimizer, and click the Fonts tab.

- 2 Select the fonts that you want to unembed.



Fonts tab of the PDF Optimizer window

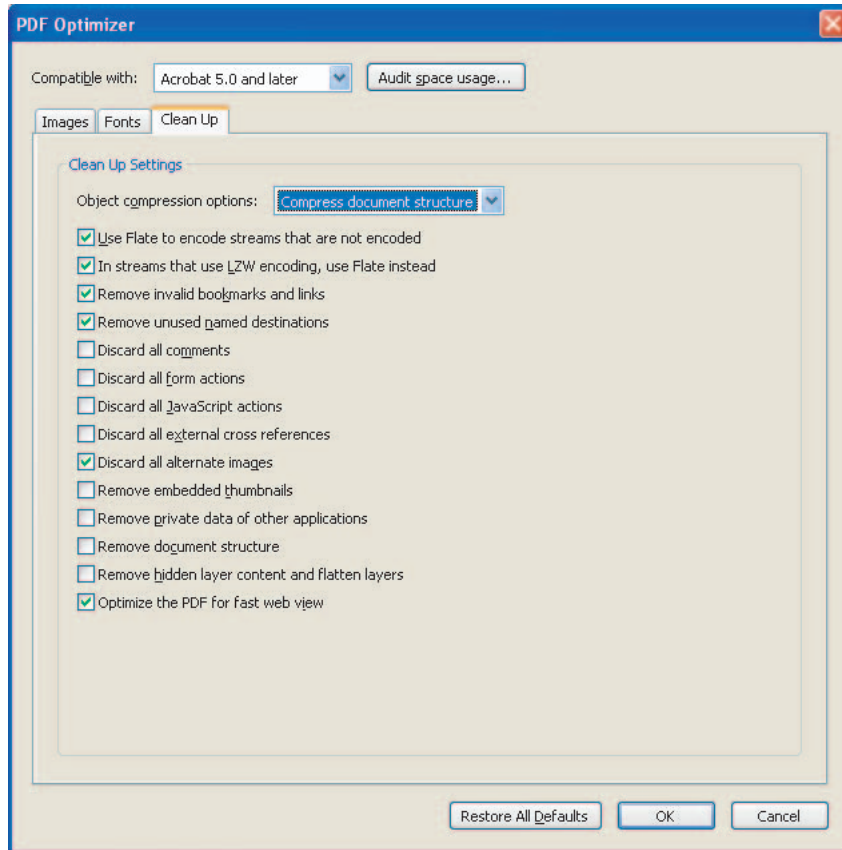
## Removing unneeded items from a document

You can use the Clean Up functions of the PDF Optimizer to remove unneeded items from the document. These might be elements that are obsolete or that are unnecessary for print. For example, for a final, high-end printing of a file, you might want to remove “live” elements such as links and interactive form fields, informational comments, and hidden layers, which would not affect the final output. In fact, the majority of items listed in the Clean Up tab can be removed from a PDF for print output, with the side benefit of reducing file size.

**Important:** Certain options, such as Remove Document Structure, may seriously affect the functionality of the PDF document. By default, only elements that do not affect functionality are selected. If you are unsure of the implications of these options, you should use the default selections.

### To clean up a document:

- 1 Choose Advanced > PDF Optimizer, and click the Clean Up tab.
- 2 Select the type of compression you want to apply to the document.
- 3 Select the items that you want to remove.



PDF Optimizer Clean Up tab with default selections

**4** Be careful selecting the following options:

- Discard All Comments removes all comments from the PDF file.
- Discard All Form Actions prevents users from inputting information into forms created in a PDF file.
- Discard All JavaScript Actions removes JavaScripts in PDF files when you set form-field properties in PDF forms.
- Discard All External Cross References removes cross-references to external documents from the PDF file.
- Remove Embedded Thumbnails removes thumbnails from the PDF file.
- Remove Private Data of Other Applications removes information regarding the application that created the PDF file. Note that this option strips from a PDF document information that is useful only to the application that originally created the document; it does not affect the functionality of the PDF document.
- Remove Document Structure removes information relating to document formatting and page-layout instructions that affect the appearance, not the content, of the document. (Document structure information is included in PDF files for ease of accessibility for people with disabilities or if the PDF file is going to be used on a hand-held device).
- Remove Hidden Layer Content and Flatten Layers removes content on hidden layers and places all remaining layered content on one layer.

**Note:** If you select *Remove Hidden Layer Content and Flatten Layers*, the optimized document looks like the original PDF, but the optimized PDF does not contain any layer information.



# Chapter 4:Handing Off Print-Ready PDF Files to a Service Provider

---

Before handing off an Adobe PDF file to a print service provider, make sure that the PDF file meets your service provider's specifications. The following list offers some recommendations:

## Before you hand off

You do these checks in Acrobat 6.0 Professional.

**Communicate with your service provider** Ask your service provider for any preflight reports and validations they may have generated on test versions of the PDF document. These reports and validations may help you resolve any lingering output problems.

**Renumber pages** Delete unnecessary PDF pages and renumber pages to reflect the final folio. In the Pages tab of the navigation pane, choose Number Pages from the Options menu. Specify a page range. Select either Begin New Section to start a new numbering sequence, or Extend Numbering Used in Preceding Section to Selected Pages to extend the numbering used for the previous set of pages to the selected pages. For more information, see the topic on numbering pages in Complete Acrobat 6.0 Help.

**Remove unneeded items from a document** Remove comments, stamps, sounds, multimedia clips, file attachments, and other elements that are obsolete or that are unnecessary for print. For example, for a final, high-end printing of a file, you might want to remove "live" elements such as links and interactive form fields, informational comments, and hidden layers, which would not affect the final output. To clean up a document, choose Advanced > PDF Optimizer, and click the Clean Up tab. Select the type of compression you want to apply to the document. Select the items that you want to remove and click OK.

**Remove security** Remove restrictions and digital signatures, if added for proofing. Choose Document > Security > Display Restrictions and Security. From the Security Method menu, choose No Security. If prompted, enter the Permissions Password and click OK. Click OK to remove security from the document, and then click OK.

**Preflight the PDF document** Preflight the document and create a report. In Acrobat, choose Document > Preflight, select a profile, and click Analyze. Review the results of the inspection and click Done. In the Preflight Results dialog box, choose an option from the Background Color menu for displaying problem objects. From the Hits per Rule menu, choose the number of instances to include in the report, and click Report. Click Choose and type a name and location for the report, and then click Save. Select options as desired and click OK.

**Communicate traps** If you are sending your Adobe PDF files to a print service provider, you can use the Trapping menu in the Document Properties dialog box (File > Document Properties) to specify whether a PDF file contains trapping information. This can help prevent the service provider from adding potentially conflicting trapping commands to the file. For details on including trapping information in a PostScript file, see the authoring application's Help.

**Check for substituted fonts** To make sure that you've properly embedded and subsetted fonts in your PDF document, use the Fonts panel of the Document Properties dialog box to check for substituted fonts. These are listed next to "Actual Font" and "Actual Font Type." You can also deselect Use Local Fonts in the Advanced menu to display the PDF document using substitute fonts for all fonts that are not embedded. If a font cannot be substituted, the text appears as bullets.

## What to give the service provider

When you deliver a PDF file to the service provider, it's helpful to provide information about the contents of the PDF document. You can provide these items using Acrobat 6.0 Professional.

**Single PDF file** Prepare one PDF file for each print job. If you have multiple files, you can convert different types of files and combine them into one Adobe PDF file. Choose File > Create PDF > From Multiple Files. Add and arrange the files, and then click OK. Name and save the consolidated PDF file using File > Save As. Use unique and intuitive filenames for each PDF file you hand off.

**Preflight report** You can capture the results of a preflight inspection, including a fonts list, in a written report or a single Adobe PDF file that you can review. Run a Preflight inspection. In the Preflight Results dialog box, choose a background color for displaying the problem objects, and choose the number of hits per rule. Click Report. Specify a name and location, select the file format and page range, and specify whether to include all details or just the problem areas. Click OK.

**Access to high-resolution images** If you choose to leave out the images when creating the Adobe PDF file, make sure that your service provider has access to the original high-resolution images that are required for proper output. In addition, make sure that the service provider has Acrobat 5.0 or later for accurate viewing of text and color graphics. For best viewing, they should use Acrobat 6.0.

**Hard-copy composite and separated proofs** Include the filenames and printers' marks on printouts, and print at 100%. To print a composite, choose File > Print and click OK. To print separations, select the output device in the Print dialog box and click Advanced. In the Output panel, choose Separations from the Color menu. Choose a CMYK profile from the Printer Profile menu. In the Marks and Bleeds panel, select All Marks. In the PostScript Options panel, choose the PostScript language level of the output device from the Print Method menu. Choose any other print options, and then click OK.

# Appendix A: Resource Guide

This appendix lists references to other Adobe and industry documentation where you can get more in-depth information on different areas, such as PDF/X. Please refer to the Adobe Web site for product information on Adobe Acrobat 6.0 Professional, including references, software downloads, searchable knowledgebase, tutorials, training, and user forums.

**Acrobat 6.0 Professional** [www.adobe.com/products/acrobatpro/main.html](http://www.adobe.com/products/acrobatpro/main.html)

**Downloads and trial software** [www.adobe.com/products/acrobatpro/main.html](http://www.adobe.com/products/acrobatpro/main.html)

**Support** [www.adobe.com/support/main.html](http://www.adobe.com/support/main.html)

**Acrobat Solutions** [www.adobe.com/products/acrobat/engineering.html](http://www.adobe.com/products/acrobat/engineering.html)

**Adobe Press books** [www.adobe.com/misc/books.html](http://www.adobe.com/misc/books.html)

**Training** [www.adobe.com/misc/training.html](http://www.adobe.com/misc/training.html)

The following table can help you find specific resources for PDF print workflow issues.

If you want...	Try this...
A list of technical resources	Go to <a href="http://partners.adobe.com/asn/">http://partners.adobe.com/asn/</a>
Information on Adobe PostScript 3 capabilities	Go to these sites: <a href="http://www.adobe.com/products/postscript/main.html">www.adobe.com/products/postscript/main.html</a> <a href="http://www.adobe.com/products/postscript/pdf.html">www.adobe.com/products/postscript/pdf.html</a> <a href="http://www.adobe.com/products/postscript/glossary.html">www.adobe.com/products/postscript/glossary.html</a>
More information on the PDF/X standard	Go to these sites: <a href="http://www.adobe.com">www.adobe.com</a> <a href="http://www.pdfx.info">http://www.pdfx.info</a> <a href="http://www.pdf-x.com">http://www.pdf-x.com</a>
An overview of the benefits of an Adobe PDF workflow	See the white paper, "The Adobe PDF workflow: Saving time and money with PDF in print," on the Create Suite CD, or go to <a href="http://partners.adobe.com/asn/printserviceprovider/index.jsp">http://partners.adobe.com/asn/printserviceprovider/index.jsp</a> .
More information about using Adobe Illustrator CS and other professional publishing applications in a PDF workflow	See the white paper, "Streamlining Professional Graphics Workflow with Adobe Illustrator CS and Adobe PDF," on the Create Suite CD, or go to <a href="http://partners.adobe.com/asn/printserviceprovider/index.jsp">http://partners.adobe.com/asn/printserviceprovider/index.jsp</a> .
More information on transparency flattening and transparency output issues	Go to the Print Service Provider Resources page of the Adobe Solutions Network (ASN) at <a href="http://partners.adobe.com/asn/">http://partners.adobe.com/asn/</a> . In addition, you can find tips and answers to frequently asked questions in the Adobe User to User forums at <a href="http://www.adobe.com/support/forums">www.adobe.com/support/forums</a> .  See the printing guides at <a href="http://partners.adobe.com/asn/printserviceprovider/index.jsp">http://partners.adobe.com/asn/printserviceprovider/index.jsp</a> .
A description of each font parameter	See the table on font embedding and subsetting parameters in the Distiller Parameter Help.
More information on fonts, including Type 1, Type 3, Type 42, and CID-keyed fonts	See Chapter 5, "Fonts," in the PostScript Language Reference, third edition, and the Adobe Solutions Network (ASN) at <a href="http://partners.adobe.com/asn/">http://partners.adobe.com/asn/</a> .  Go to: <a href="http://www.adobe.com/products/postscript/pdfs/cid.pdf">www.adobe.com/products/postscript/pdfs/cid.pdf</a> .
More information on color management and Adobe print publishing applications	See "Producing Consistent Color" in any print publishing application's Help, or search the Adobe Web site.  See the white paper "Color Consistency and Adobe Creative Suite" at <a href="http://partners.adobe.com/asn/printserviceprovider/index.jsp">http://partners.adobe.com/asn/printserviceprovider/index.jsp</a> .

If you want...	Try this...
Up-to-date information on Acrobat support issues	If you have access to the Internet, choose Help > Online Support in Acrobat. On this Web site, you can view the top support issues, obtain training information, and browse through tutorials.
Plug-ins for Adobe Acrobat software	Go to: <a href="http://www.adobe.com/store/products/plugins/view_by_application.jhtml?id=catPluginsForAcrobat">www.adobe.com/store/products/plugins/view_by_application.jhtml?id=catPluginsForAcrobat</a> .



# Appendix B: Settings and options

## Transparency flattener options

The Transparency Flattener options let you tailor your output to your project needs. You can set the options in the Transparency Flattener Preset Options dialog box or the Flattener Preview palette in Illustrator or InDesign, or the Flatten Transparency dialog box (Object > Flatten Transparency) in Illustrator. The options you select for flattened transparency output affect the options available in the Transparency Flattener Preview palette. (See “Flattener preview options” on page 62.)

**Note:** To get the best output, set the Raster/Vector Balance slider to the highest value (100) and enter a high rasterization resolution for Line Art and Text (1200 ppi) and Gradient and Mesh (300). Higher resolution may be necessary for complex or high-quality output, but will increase output file size and processing time. Deselect Convert All Strokes to Outlines and Convert All Text to Outlines. When you set the highest vector value on the slider, Clip Complex Regions is selected automatically.

Flattener setting	Description	Option appears in the following product(s):		
		AC	AI	ID
Name	Specifies the name of the preset. Depending on the dialog box, you can type a name in the Name text box or accept the default. You can enter the name of an existing preset to edit that preset. However, you can't edit the default presets.	X	X	X
Raster/Vector Balance or Resolution text box	Specifies the amount of rasterization. The higher the setting, the less rasterization is performed on artwork. Select the highest setting to keep as much artwork as possible vector data; select the lowest setting to rasterize all the artwork.	X	X	X
Line Art and Text Resolution†	Specifies the resolution for vector objects rasterized as a result of flattening.	X		X
Gradient and Mesh Resolution†	Specifies the resolution for gradients and mesh objects rasterized as a result of flattening.	X	X	X
Convert all Text to Outlines	Converts all type objects (point type, area type, and path type) to outlines, and discards all type glyph information. This option ensures that the width of text stays consistent during flattening. Note that selecting this option causes small fonts to appear slightly thicker (especially when printing on lower-end printing systems). In addition, selecting this option may make small fonts less readable and degrade flattening performance.	X	X	X
Convert all Strokes to Outlines	Converts all strokes to simple filled paths. This option ensures that the width of strokes stays consistent during flattening. Note that selecting this option causes thin strokes to appear slightly thicker (especially when printing on lower-end printing systems).	X	X	X
Clip Complex Regions‡	Ensures that the boundaries between vector artwork and rasterized artwork fall along object paths. Selecting this option reduces stitching artifacts that result when part of an object is rasterized while another part of the object remains in vector form (as determined by the Raster/Vector slider). However, selecting this option may result in paths that are too complex for the printer to handle.	X		X

Flattener setting	Description	Option appears in the following product(s):		
		AC	AI	ID
Name	Specifies the name of the preset. Depending on the dialog box, you can type a name in the Name text box or accept the default. You can enter the name of an existing preset to edit that preset. However, you can't edit the default presets.	X	X	X
Raster/Vector Balance or Resolution text box	Specifies the amount of rasterization. The higher the setting, the less rasterization is performed on artwork. Select the highest setting to keep as much artwork as possible vector data; select the lowest setting to rasterize all the artwork.	X	X	X
Preserve Alpha Transparency*	Preserves the alpha transparency of flattened objects. This option is the same thing as rasterizing to RGBA or CMYKA, but with vectors preserved. Blending modes are no longer live and opacity is limited to the object level, but both the appearance and the level of alpha transparency are preserved. Preserve Alpha Transparency can be useful if you are exporting to Macromedia Flash or standard SVG, since both of these formats support alpha transparency.		X	
Preserve Spot Colors and Overprints*	Generally preserves spot colors. It also preserves overprinting for objects that are not involved in transparency. Select this option if you are printing separations and the document contains spot colors and overprinted objects. Deselect this option when saving files for use in page-layout applications. With this option selected, overprinted areas that interact with transparency are flattened, while overprinting in other areas is preserved. The results are unpredictable when the file is output from a page-layout application.		X	

\* This option available only in the Flatten Transparency dialog box.

† For both Line Art and Text Resolution and Gradient and Mesh Color Resolution, the Flatness setting affects the precision of intersections when flattening. In most cases, a value of 300 is sufficient for line art and text, and a value of 150 is sufficient for gradients and gradient meshes. However, if small fonts or fine objects will be rasterized, or if the output is a high-quality print, higher values (600 ppi or more) are necessary. Using very high values is not recommended, because it can degrade performance without noticeably improving the quality of the artwork.

‡ Some print drivers process raster and vector art differently, and this can also result in color stitching. You may be able to minimize stitching problems by disabling some print-driver specific color-management settings. Because these settings vary with each printer, see the documentation that came with your printer.

## Flattener preview options

The following options allow you to choose what to highlight when previewing transparency on-screen.

Flattener preview setting	Description	Option appears in the following product(s):		
		AC	AI	ID
None	Disables previewing, and is the default setting.		X	X
Rasterized Complex Regions	Highlights the areas that will be rasterized for performance reasons (as determined by the Raster/Vector Balance slider). Keep in mind that the boundary of the highlight area has a higher probability of producing stitching problems (depending on the print-driver settings and the rasterization resolution). To minimize stitching problems, select the Clip Complex Regions option in the Transparency Flattener Preset Options dialog box.	X	X	X
Transparent Objects	Highlights the objects that are sources of transparency, such as objects with partial opacity (including images with alpha channels), objects with blending modes, and objects with opacity masks.	X	X	X

Flattener preview setting	Description	Option appears in the following product(s):		
		AC	AI	ID
None	Disables previewing, and is the default setting.		X	X
All Affected Objects	Highlights all objects that are involved in transparency, including transparent objects and objects that are overlapped by transparent objects. The highlighted objects will be affected by the flattening process—their strokes or patterns will be expanded, portions of them may get rasterized, and so on.	X	X	X
Affected Graphics	Highlights all placed content affected by transparency or transparency effects. This is useful for service providers who need to see graphics that require attention to print properly.			X
Affected Linked EPS Files	Highlights all linked EPS files that are affected by transparency.		X	
Expanded Patterns	Highlights all patterns that will be expanded because they are involved in transparency.	X	X	
Outlined Strokes	Highlights all strokes that will be outlined because they are involved in transparency or because the Convert All Strokes to Outlines option is selected. (See “Transparency flattener options” on page 61.)	X	X	X
Outlined Text	Highlights all text that will be outlined because it is involved in transparency or because the Convert All Text to Outlines option is selected. (See “Transparency flattener options” on page 61.)			X
Raster-Fill Text and Strokes	Highlights text and strokes that have rasterized fills as a result of flattening.			X
All Rasterized Regions	Highlights objects and intersections of objects that will be rasterized because there is no other way of representing them in PostScript or because they are more complex than the threshold specified by the Raster/Vector Balance slider. For example, the intersection of two transparent gradients will always be rasterized, even when the Raster/Vector Balance value is 100. The All Rasterized Regions option also shows raster graphics (such as Photoshop files) involved in transparency, and raster effects such as drop shadows and feathers. Note that this option takes longer to process than the others.			X

**Note:** In the final output, outlined strokes and text may appear slightly different from native ones, especially very thin strokes and very small text. However, the Flattener Preview palette does not highlight this altered appearance.

## Recommended Adobe PDF settings for a print production workflow

The options in the Adobe PDF settings tabs control such settings as Acrobat version compatibility, image compression, font embedding and subsetting, color handling, and PDF/X compliance. The settings you select can have a significant impact on the quality of your final printed results. We recommend that you ask your service provider for a PDF settings file that meets their requirements for print production. However, if you intend to customize your own PDF settings, you can use the following recommendations as a baseline, and then consult with your service provider. For in-depth explanations of the image settings, see the Complete Acrobat 6.0 Help.

## General settings

The General tab options allow you to control various general options for creating PDF files.

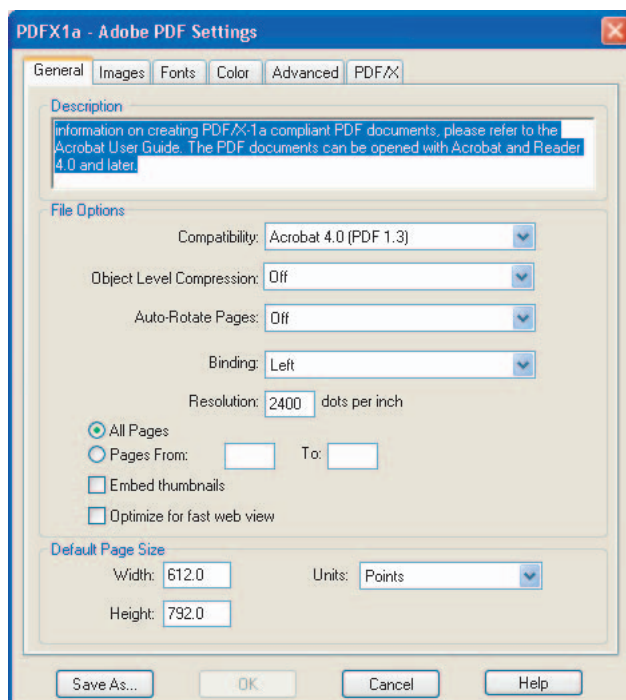
**Compatibility** Selects the level of Acrobat compatibility. You may want to save in an earlier format, particularly depending on the output devices you are using. Complete Acrobat 6.0 Help shows the differences between PDF files created with different levels of Acrobat compatibility (look up “General options settings” in the index).



*You should check compatibility of the Adobe PDF output with RIPs or any other software or devices that can consume the PDF directly.*

**Object Level Compression** Consolidates small objects (each of which isn’t compressible itself) into streams that can then be efficiently compressed.

- Maximum ensures that most nonprinting information is compressed inside the file. Maximum is only available when PDF 1.5 is selected. Structural information, font-related information, and metadata are examples of nonprinting content that is compressed when Maximum is chosen. Using Maximum compression creates a file that can be opened only by Acrobat 6.0 or Adobe Reader 6.0.
- Tags Only compresses structural information within the PDF file. Tags Only is available when PDF 1.4 or later is selected. PDF files with tags-only compression can be opened and printed with Acrobat 5.0, but any bookmarks or other structural information will not be visible to users of Acrobat 5.0 or Acrobat Reader 5.0.
- Off applies no object-level compression, and is compatible with previous versions of Acrobat and Acrobat Reader.



Adobe PDF Settings: General tab

**Auto-Rotate Pages** Automatically rotates pages based on text orientation or on DSC comments. For example, some pages (such as those containing tables) may require the document to be turned sideways. Choose the Individually option to rotate each page based on the direction of the text on that page. Choose the Collectively by File option to rotate all pages in the document, based on the orientation of the majority of text.

**Binding** Specifies whether to display a PDF file with left-side or right-side binding. This affects the display of pages in the Facing Page - Continuous layout and the display of thumbnails side by side.

**Resolution** Emulates the resolution of a printer to determine the quality of the output. Most commonly, resolution determines the number of steps in a gradient or blend. You can enter a value from 72 to 4000. Generally, however, you should leave this at the default setting.

**Pages** Specifies which pages to convert to Adobe PDF. Leave the To box empty to create a range from the page number you enter in the From box to the end of the file. This setting is useful when you need to convert a portion of a PostScript file (a specific page or range of pages) to PDF.

**Embed Thumbnails** Creates a thumbnail preview for each page in the PDF file. Acrobat 5.0 and later (including Reader) automatically generates thumbnails dynamically whenever you click the Pages tab of a PDF file; earlier versions do not. Adding thumbnails increases the PDF file size by roughly 4K per thumbnail. Deselect this setting when users of Acrobat 5.0 and later will view and print the document.

**Optimize for Fast Web View** Restructures the file for page-at-a-time downloading (byte-serving) from Web servers. This makes for faster access and viewing when downloading the file from the Web or a network.

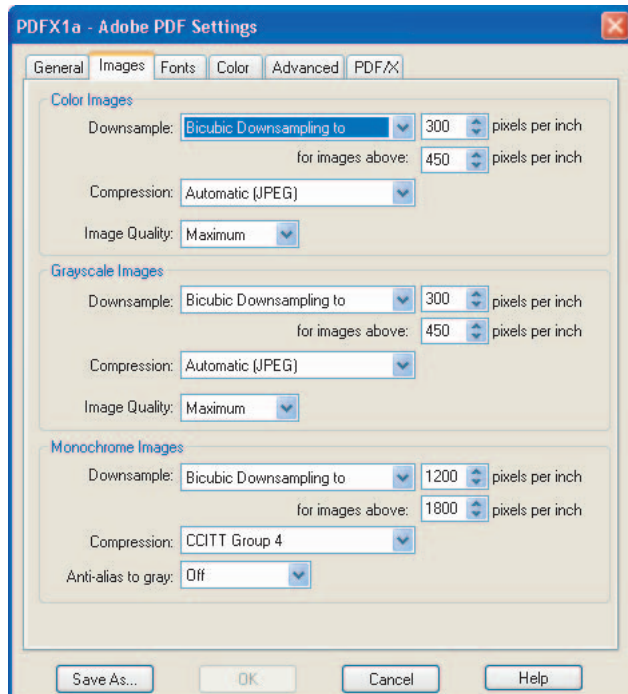
**Default Page Size** Specifies the page size to use when one is not specified in the original file. This setting is rarely used by Distiller—only when the page size is not specified by the application. Typically, PostScript files include this information, except for EPS files, which give a bounding box size, but not a page size. The maximum page size allowed is 200-by-200 inches (45-by-45 inches for Acrobat 3.0 compatibility).

## Images settings

The Images tab options specify compression and resampling for images. You may want to experiment with these options to find an appropriate balance between file size and image quality. Resampling refers to changing the pixel dimensions (and therefore the display size) of an image. When you downsample (decrease the number of pixels), information is deleted from the image. When you resample up (increase the number of pixels), new pixels are added based on color values of existing pixels.



*Watch out for high image compression (which is lossy) that can damage the appearance of images in high-quality printing. Use Medium, High, or Maximum quality for images.*



Adobe PDF Settings: Images tab

To downsample color, grayscale, or monochrome images, Distiller combines pixels in a sample area to make one larger pixel. You provide the resolution of your output device in dots per inch (dpi) and enter a threshold resolution in the For Images Above text box. For all images with resolution above this threshold, Distiller combines pixels as needed to reduce the image's resolution (pixels per inch) to the specified dpi setting.

- Average Downsampling To averages the pixels in a sample area, and replaces the entire area with the average pixel color at the specified resolution.
- Bicubic Downsampling To uses a weighted average to determine pixel color, and usually yields better results than the simple averaging method of downsampling. Bicubic is the slowest but most precise method, resulting in the smoothest tonal gradations.
- Subsampling To chooses a pixel in the center of the sample area, and replaces the entire area with that pixel at the specified resolution. Subsampling significantly reduces the conversion time compared with downsampling, but results in images that are less smooth and continuous.

The Compression option lets you set the compression to be applied to color, grayscale, and monochrome images. For color and grayscale images, you can also set the image quality.

- For color or grayscale images, choose ZIP to apply compression that works well on images with large areas of single colors or repeating patterns, such as screen shots, simple images created with paint programs, and black-and-white images that contain repeating patterns.
- Choose JPEG, with an Image Quality of Minimum to Maximum, to apply compression that is suitable for grayscale or color images, such as continuous-tone photographs that contain more detail than can be reproduced on-screen or in print.
- Choose JPEG2000, with an Image Quality of Lossless, to apply lossless compression with additional advantages, such as progressive display. JPEG2000 compression can be used when the PDF file will be printed from Acrobat, but for PDF files that will be submitted directly to a RIP, make sure that JPEG2000 is supported.

**Note:** To display JPEG2000 options, you must select Acrobat 6.0 (PDF 1.5) from the Compatibility menu on the General tab.

- Choose Automatic (JPEG) or Automatic (JPEG2000) to determine automatically the best quality for color and grayscale images. (JPEG2000 is the new international standard for the compression and packaging of image data. For more information, see “Converting to JPEG or JPEG2000 format” in Complete Acrobat 6.0 Help.

**Note:** RIPs that consume PDF natively (that is, that can process PDF files without converting them to PostScript) do not support JPEG2000. When JPEG2000 graphics are in a PDF file, they are re-compressed using other compression methods, such as JPEG or Run Length. If you need to remove JPEG2000 from a file, use PDF Optimizer (Advanced > PDF Optimizer).

- For monochrome images, choose CCITT Group 4, CCITT Group 3, ZIP, or Run Length compression. For descriptions of these compression methods, see Complete Acrobat 6.0 Help.

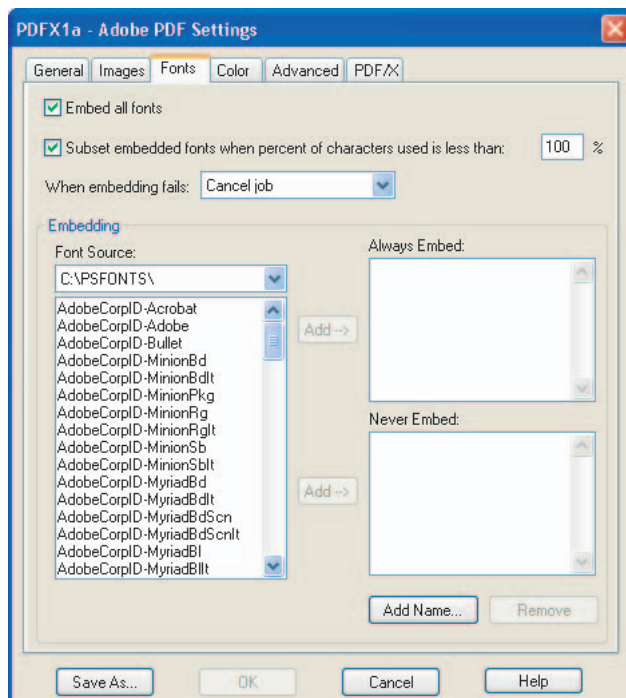
**Note:** In some cases, downsampling monochrome images is not appropriate in print production. If your document contains a bitmap representation of a scanned halftone, downsampling may produce poor quality results.

Use the Anti-Alias to Gray option to smooth jagged edges in monochrome images. Choose 2 bit, 4 bit, or 8 bit to specify 4, 16, or 256 levels of gray. (Anti-aliasing may cause small type or thin lines to look blurry when using lower than 8 bit.)

## Fonts settings

The Fonts tab options specify which fonts to embed in an Adobe PDF file, and whether to embed a subset of the font representing the characters used in the document.

**Note:** When you combine PDF files with the same font subset, Acrobat attempts to combine the font subsets. This is done to reduce the size of the PDF document.



Adobe PDF Settings: Fonts tab



**Note:** It is recommended that you select *Embed All Fonts* to ensure that others can view and print your PDF files using the same fonts. If your PDF file will not be edited by someone later, subset your fonts to reduce file size. By entering a value of 100%, you ensure that only the subset of the font that is used in the document will be embedded.

**Embed All Fonts** Embeds all fonts used in the original file. Font embedding is highly recommended for all typical print output and is required for PDF/X compliance. (See “About PDF/X” in Complete Acrobat 6.0 Help.)

**Subset Embedded Fonts When Percent of Characters Used Is Less Than** Specifies a threshold percentage if you want to embed only a subset of the fonts. For example, if the threshold value is 35, and more than 35% of the characters are used, Distiller embeds the entire font.

**Note:** For some special fonts, such as dingbat fonts or pi characters, Distiller may fully embed the font regardless of the subset value entered. This is done to ensure the proper characters are used in viewing and printing the PDF file.

**When Embedding Fails** Specifies how Distiller responds if it cannot find a font to embed when processing a file. You can have Distiller ignore the request and substitute the font, warn you and substitute the font, or cancel processing. The best practice for PDF files meant for print is to cancel processing and create a warning. The When Embedding Fails option also applies to fonts that have a Do Not Embed flag.

**Always Embed** To embed only certain fonts, move them into the Always Embed list.

**Never Embed** Move fonts that you do not want to embed to this list. If necessary, choose a different font folder from the pop-up menu to display the font in the font list. Ctrl-click (Windows) or Command-click (Mac OS) to select multiple fonts to move.

**Add Name** If the font you want is not in a font folder, click Add Name, enter the name of the font, select Always Embed List (or Never Embed List), and click Add.

**Note:** Acrobat 6.0 Professional disallows embedding of fonts with certain vendor settings, such as the non-embed flag. Fonts that are unavailable for embedding are preceded by a padlock icon. If you select a padlocked font, the nature of the unavailability is described in the explanation area of the Adobe PDF Options dialog box.

**Remove** Removes a font from the Always Embed or Never Embed list. This does not remove the font from your system; it just removes the reference to it in the list.

**Note:** Adobe Acrobat 6.0 does not include the Times, Helvetica, and ZapfDingbats fonts that have been included in previous versions. If you want these fonts to be viewed and printed in your PDF file, embed the fonts.

For a description of specific font parameters, see Table 3.6, “Font embedding and subsetting parameters,” on page 73 of the *Distiller Parameters Guide* in the Acrobat Distiller Help menu. For additional information on Type 1, Type 3, Type 42, and CID-keyed fonts, see Chapter 5, “Fonts,” in the *PostScript Language Reference, Third Edition*. You also can find additional documentation on fonts on the Adobe Solutions Network Web site at [www.adobe.com/asnprint/tech/type](http://www.adobe.com/asnprint/tech/type).

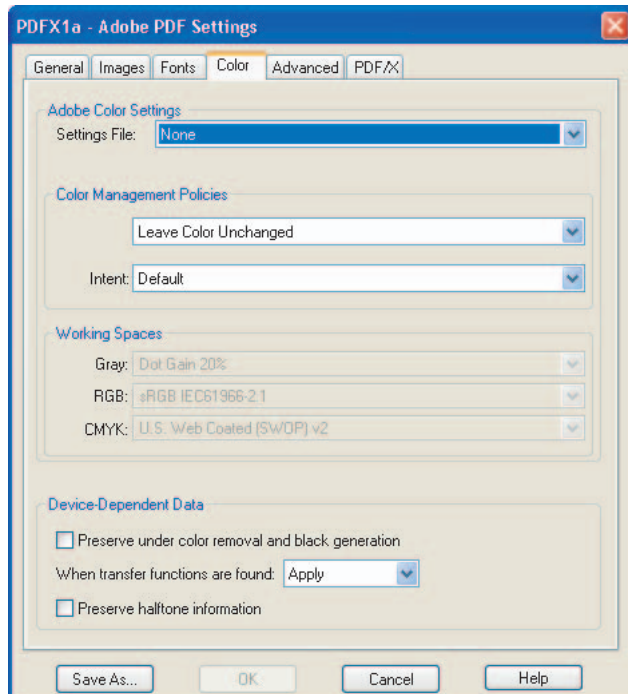
**Note:** Distiller 5.0 and 6.0 can embed characters from an OpenType® font used in a document, but cannot embed the OpenType font itself; the font is converted to CID TrueType or CID Type 1.

## Color settings

You can control whether Distiller preserves custom halftoning, overprinting, and transfer function information in the PDF file. You can also specify which ICC profile to use for color conversion. See “ICCBased Color Spaces” in Section 4.5.4 of the *PDF Reference, Third Edition*, for details on profiles.

Whether you are using color-management information in the PostScript file, using Distiller color-management settings files, or defining custom settings, you set all color-management information for Distiller on the Color tab of the Adobe PDF Settings dialog box.





Adobe PDF Settings: Color tab

**Settings File** This menu contains a list of color settings that are used in major graphics applications such as Adobe Photoshop®, Adobe Illustrator®, and Adobe InDesign®. The color setting you choose determines the other options available in this dialog box. For example, if you choose anything other than None, all options other than those for Device-Dependent Data are predefined and dimmed. You can edit the Color Management Policies and Working Spaces settings only if you select None from the Settings File menu. For a description of the color settings, see the topic on using predefined color management settings in Complete Acrobat 6.0 Help.

**Note:** You can share or transfer color settings files among Adobe applications to ensure that all applications are using the same settings.

**Color Management Policies** If you selected None from the Settings File menu, choose a color-management policy to specify how Distiller converts unmanaged color in a PostScript file when you are not using a Distiller CSE.

- **Leave Color Unchanged** leaves device-dependent colors unchanged and preserves device-independent colors as the nearest possible equivalent in PDF.
- **Tag (or Convert) Everything for Color Management** embeds an ICC profile when distilling files and calibrates color in the images, making colors in the resulting PDF files device-independent if you selected Acrobat 4.0 (PDF 1.3) or later compatibility on the General tab. If you selected Acrobat 3.0 (PDF 1.2) compatibility, it does not embed ICC profiles in the files. However, device-dependent color spaces (RGB, Grayscale, and CMYK) in files are converted to device-independent color spaces (CalRGB, CalGray, and LAB).
- **Tag (or Convert) Only Images for Color Management** embeds ICC profiles only in images, not text or graphics, when distilling files if you selected Acrobat 4.0 (PDF 1.3) compatibility on the General tab. This prevents black text from undergoing any color shift. If you selected Acrobat 3.0 (PDF 1.2) compatibility, it does not embed ICC profiles in the files. However, device-dependent color spaces (RGB, Grayscale, and CMYK) in images are converted to device-independent color spaces (CalRGB, CalGray, and LAB). Text and graphics are not converted.

- Convert All Colors to sRGB (or Convert Everything to CalRGB) calibrates color in the file, making the color device-independent, similar to Tag (or Convert) Everything for Color Management. If you selected Acrobat 4.0 (PDF 1.3) or later compatibility on the General tab, CMYK and RGB images are converted to sRGB. If you selected Acrobat 3.0 (PDF 1.2) compatibility, CMYK and RGB images are converted to calibrated RGB (CalRGB).

**Intent** Choose a method to map colors between color spaces. The result of any particular method depends on the profiles of the color spaces. For example, some profiles produce identical results with different methods.

- Default uses the supplied value in PostScript. If there is no value supplied, the PDF default (Relative Colorimetric) is used.
- Perceptual maintains the relative color values among the original pixels as they are mapped to the destination gamut. It preserves the visual relationship between colors, although the color values themselves may change.
- Saturation maintains the relative saturation values of the original pixels. This method is suitable for business graphics, where the exact relationship between colors is not as important as having bright saturated colors.
- Relative Colorimetric remaps the white point of the source space to the white point of the destination space.
- Absolute Colorimetric disables the matching of white and black points when converting colors. This method is not generally recommended, unless you must preserve signature colors, such as those used in trademarks or logos.

**Note:** In order to ensure the most accurate rendition of color from a PDF file, select either Relative Colorimetric or Absolute Colorimetric.

**Working Spaces** For all Color Management Policies values other than Leave Color Unchanged, choose a working space to specify which ICC profiles are used for defining and calibrating the grayscale, RGB, and CMYK color spaces in distilled PDF files.

- For Gray, choose a profile to define the color space of all uncalibrated grayscale images in files. This option is available only if you chose Tag Everything for Color Management or Tag Only Images For Color Management. The default ICC profile for gray images is Adobe Gray - 20% Dot Gain. You can also choose None to prevent grayscale images from being converted.
- For RGB, choose a profile to define the color space of all uncalibrated RGB images in files. The default, sRGB IEC61966-2.1, is generally a good choice, because it is becoming an industry standard and recognized by many output devices. You can also choose None to prevent RGB images from being converted.
- For CMYK, choose a profile to define the color space of all uncalibrated CMYK images in files. The default is U.S. Web Coated (SWOP) v2. You can also choose None to prevent CMYK images from being converted.

**Note:** Choosing None for all three working spaces has the same effect as selecting the option Leave Color Unchanged.

**Device-Dependent Data** Transfer functions are *not* recommended to create artistic effects, although transfer functions may be used to produce artistic effects and to correct for the characteristics of a specific output device. For example, a file that is intended for output on a particular imagesetter may contain transfer functions that compensate for the dot gain inherent to that output device.

- Preserve Under Color Removal and Black Generation retains these settings if they exist in the PostScript file. Black generation calculates the amount of black to use when trying to reproduce a particular color. Undercolor removal (UCR) reduces the amount of cyan, magenta, and yellow components to compensate for the amount of black that was added by the black generation. Because it uses less ink, UCR is generally used for newsprint and uncoated stock.
- Preserve Transfer Functions retains the transfer functions that are traditionally used to compensate for dot gain or dot loss that may occur when an image is transferred to film. Dot gain occurs when the ink dots that make up a printed image are larger (for example, due to spreading on paper) than in the halftone screen; dot loss occurs when the dots print smaller. With this option, the transfer functions are kept as part of the file, and are applied to the file when it is output.

- Apply Transfer Functions does not keep the transfer function, but applies it to the file, changing the colors in the file.

**Note:** *The use of transfer functions is prohibited in PDF/X-compliant files.*

- Remove Transfer Functions removes any applied transfer functions. Applied transfer functions should be removed, unless the PDF file is to be output to the same device for which the source PostScript file was created.
- Preserve Halftone Information retains any halftone information in files. Halftone information consists of dots that control how much ink is deposited by halftone devices at a specific location on the paper. Varying the dot size and density creates the illusion of variations of gray or continuous color. For a CMYK image, four halftone screens are used: one for each ink used in the printing process.

**Note:** *The use of special halftones is restricted for PDF/X-compliant files. For PDF/X compliance, it is recommended that halftones be discarded.*

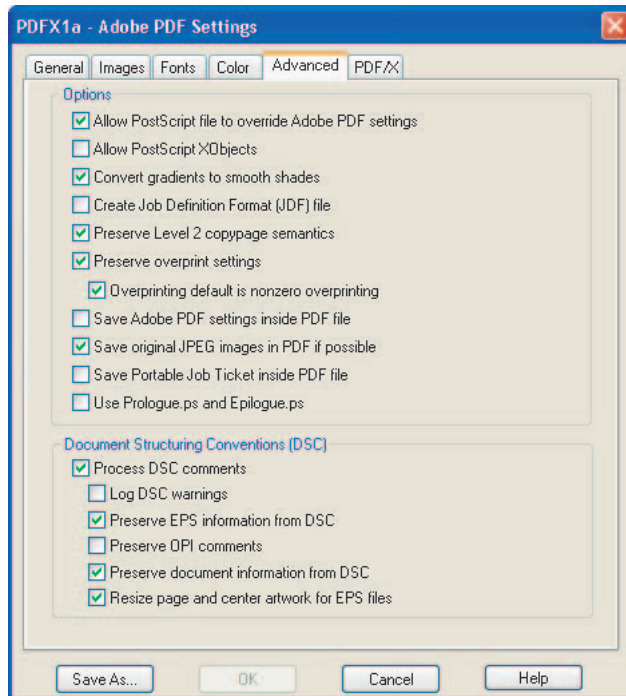
## Advanced settings

The Advanced tab lets you create a job definition format (JDF) file, save Distiller/PDF creation settings within a PDF file (the settings can be extracted and used to create other PDF documents), save a portable job ticket inside the PDF file, and preserve OPI, EPS, and document information from document structuring conventions (DSC).

In a PostScript file, DSC comments contain information about the file (such as the originating application, the creation date, and the page orientation) and provide structure for page descriptions (such as beginning and ending statements for a prologue section). DSC comments can be useful when your document is going to print or press or through additional processing, such as imposition.

When working with the Advanced options, it is helpful to have an understanding of the PostScript language and how it is translated to PDF. See the *PostScript Language Reference, Third Edition*, the *Portable Document Format Reference Manual*, and the article *Updates to the Portable Document Format Reference Manual* at <http://partners.adobe.com/asn/acrobat/index.jsp> (English only).

**Note:** *The ASCII Format option has been removed from Distiller, but is still available as a Distiller parameter. For details, see the Distiller Parameters Guide in the Acrobat Distiller Help menu.*



Adobe PDF Settings: Advanced tab

**Allow PostScript File to Override Adobe PDF Settings** Uses settings stored in the PostScript file rather than the current PDF settings file. Before processing a PostScript file, you can include parameters in the file to control compression of text and graphics, downsampling and encoding of sampled images, and embedding of Type 1 fonts and instances of Type 1 Multiple Master fonts. For details, see the Distiller Parameters Guide in the Acrobat Distiller Help menu.

**Allow PostScript XObjects** Allows the creation of PostScript XObjects, which store fragments of PostScript code to be inserted into the current stream without interpretation. Deselect this option if you create PDF files with Acrobat 5.0 (PDF 1.4) or later compatibility to prevent PostScript XObjects from being created.

**Convert Gradients to Smooth Shades** Converts blends to smooth shades for Acrobat 4.0 and later, making PDF files smaller, and potentially improving the quality of final output. Distiller converts gradients from Adobe Illustrator, Adobe InDesign, Macromedia FreeHand, CorelDRAW, QuarkXPress, and Microsoft PowerPoint.

**Create Job Definition Format (JDF) File** Produces a standardized XML-based job ticket with information about the file for a printing press. For details on creating and using JDF, see the *Distiller Parameters Guide* in the Acrobat Distiller Help menu, or the *Portable Document Format Reference Manual*, and the *Updates to the Portable Document Format Reference Manual* on the Adobe Web site.

**Preserve Level 2 Copypage Semantics** Uses the copypage operator defined in LanguageLevel 2 PostScript. If you have a PostScript file and select this option, a copypage operator copies the page. If this option is not selected, the equivalent of a showpage operation is executed, except that the graphics state is not reinitialized.

**Preserve Overprint Settings** Applies to overprinting spot colors and retains any overprint settings in files being converted to PDF. Overprinted colors are two or more inks printed on top of each other. For example, when a cyan ink prints over a yellow ink, the resulting overprint is a green color. Without overprinting, the underlying yellow would not be printed, resulting in a cyan color.

**Note:** If Preserve Overprint is not selected, some flattened transparencies may not be processed properly.

**Overprinting Default Is Nonzero Overprinting** Applies to process colors, patterns, smooth shades, and other items, and inserts the OPM1 operator wherever the Setoverprint operator is present. This option should always be turned on when Preserve Overprint Settings is used, to ensure proper conversion of overprints.

**Save Adobe PDF Settings Inside PDF File** Embeds the Distiller settings file used to create the PDF file. This allows you to know exactly how the PDF file was created. You can open and view the settings file (which has a .joboptions extension) in the File Attachments dialog box in Acrobat (Document > File Attachments). The .joboptions file becomes an item in the EmbeddedFiles tree inside the PDF file. For details, see the *Portable Document Format Reference Manual, Version 1.4*, sections 3.6.3 and 3.10.3.

**Save Original JPEG Image in PDF If Possible** Processes compressed JPEG images (images that are already compressed using DCT encoding) without recompressing them. Image data is preserved. For more information on how this feature is used, refer to the Distiller Parameters Guide in the Acrobat Distiller Help menu.

**Save Portable Job Ticket Inside PDF File** Preserves a PostScript job ticket in the PDF file that contains information about page size, resolution, and trapping rather than about content. This information can be used later in a workflow or for printing the PDF file.

**Use Prologue.ps and Epilogue.ps** Sends a prologue and epilogue file with each job. These files have many purposes. For example, prologue files can be edited to specify cover pages; epilogue files can be edited to resolve a series of procedures in a PostScript file. Sample Prologue.ps and Epilogue.ps files are located in Documents and Settings\All Users\Documents\Adobe PDF 6.0\Data (Windows), and Users/Shared/Adobe PDF 6.0/Data (Mac OS).

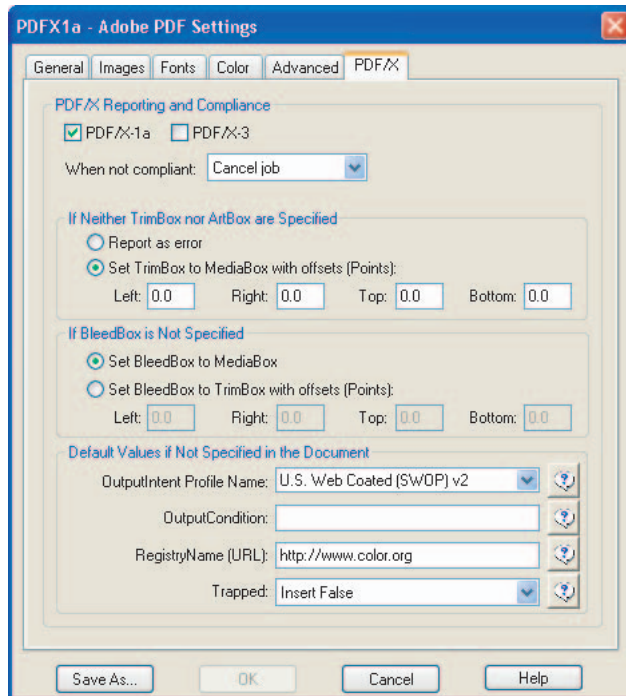
***Note:** Distiller processes prologue and epilogue files only if both files are present and properly located. The two files must be used together. If the prologue and epilogue files are at the same level as the In and Out folders of a watched folder, they are used instead of the ones in the Distiller folder.*

**Process DSC Comments** Maintains DSC information from a PostScript file. The options are:

- Log DSC Warnings displays warning messages about problematic DSC comments during processing, and adds them to a log file.
- Preserve EPS Information from DSC retains information such as the originating application and creation date for an EPS file. If this option is deselected, the page is sized and centered based on the top left corner of the top left object and bottom right corner of the bottom right object on the page.
- Preserve OPI Comments retains information needed to replace a For Placement Only (FPO) image or comment with the high-resolution image located on servers that support Open Prepress Interface (OPI) versions 1.3 and 2.0. For more information on OPI, see <http://partners.adobe.com/asn/acrobat/index.jsp> (English only).
- Preserve Document Information from DSC retains information such as the title, creation date, and time. When you open a PDF file in Acrobat, this information appears in the Document Properties Description panel (File > Document Properties > Description).
- Resize Page and Center Artwork for EPS Files centers an EPS image and resizes the page to fit closely around the image. This option applies only to jobs that consist of a single EPS file.

## PDF/X settings

For users adapting their workflows to the international PDF/X compliance standards (ISO standard for prepress content exchange), Distiller provides features for creating PDF/X-1a and PDF/X-3 compliant files. PDF/X is a subset of the Adobe PDF specification, designed specifically to reduce common errors in prepress documents, such as missing fonts and images.



Adobe PDF Settings: PDF/X tab

PDF/X-compliant files are primarily used as a standardized format for the exchange of PDF files intended for high-resolution print production. PDF/X-1a files use only CMYK and spot colors (no RGB), fonts and images are embedded, output intents and page boxes are defined, and the parameter indicates whether or not the file has been trapped. PDF/X-3 files are for color-managed workflows. You can also validate a PDF/X file from a compliant PDF file using the preflight feature (choose Document > Preflight in Acrobat 6.0 Professional).

When using the predefined PDF/X job settings file, Acrobat 6.0 Distiller will check document contents in the PostScript file to make sure they meet standard PDF/X-1a or PDF/X-3 criteria before creating the Adobe PDF file. In addition, you can require that the PostScript file meet additional criteria by selecting options in the PDF/X tab.

**Note:** Users creating PDF/X-compliant files from Microsoft Office applications such as Word or PowerPoint will not be able to create PDF/X-1a compliant files, because of the color space used by Microsoft when printing PostScript. Using the PDF/X-3 settings file of Distiller will produce PDF/X-compliant files.

**PDF/X-1a or PDF/X-3** Produces a report that indicates whether the file complies with PDF/X requirements and, if not, what problems were encountered. The .log file appears at the bottom of the dialog box.

**Note:** Do not select both PDF/X-1a and PDF/X-3; PDF/X-1a will take precedence over PDF/x-3.

**When Not Compliant** Select Continue to create a PDF file but to note the problems in the report. Select Cancel Job to create a PDF file only if the PostScript file meets the selected PDF/X requirements. If both PDF/X report options are checked, and the PostScript file meets only one set of PDF/X criteria (for example, PDF/X-3), Distiller creates the compliant file and notes the problems in the report.



You should always “fail” jobs when they are not complaint. This ensures you do not create files that are close, but not quite up to, your specifications.

**Report as Error** Flags the PostScript file as noncompliant if one of the reporting options is selected and a trim box or art box is missing from any page.

**Set TrimBox to MediaBox with Offsets** Computes values for the trim box based on the offsets for the media box of respective pages if neither the trim box nor art box is specified. The trim box is always as small or smaller than the enclosing media box. This option uses the units specified on the General tab of the Adobe PDF Settings dialog box.

**Set BleedBox to MediaBox** Uses the media box values for the bleed box if the bleed box is not specified.

**Set BleedBox to TrimBox with Offsets** Computes values for the bleed box based on the offsets for the trim box of respective pages if the bleed box is not specified. The bleed box is always as large as, or larger than, the enclosed trim box. This option uses the units specified on the General tab of the Adobe PDF Settings dialog box.

**OutputIntent Profile Name (required)** Indicates the characterized printing condition for which the document has been prepared. If a document does not specify an OutputIntent name, Distiller uses the selected value from this menu. You can select one of the provided names, or enter a name in the space provided. If your workflow requires that the document specify the output intent, choose None. Any document that does not meet the requirement will fail compliance checking.

**Output Condition** Describes the intended printing condition. This entry can be useful for the intended receiver of the PDF document.

**RegistryName (URL) (not required or recommended if an ICC output intent profile is used)** Indicates the Web address for more information on the registry. The URL is automatically entered for ICC registry names.

**Trapped (required)** Indicates the state of trapping in the document. PDF/X compliance requires a value of True or False. If the document does not specify the trapped state, the value provided here is used. If your workflow requires that the document specify the trapped state, choose Leave Undefined. Any document that doesn't meet the requirement will fail PDF/X compliance checking.



# Index

## A

Acrobat

- editing objects 50
- overprint previewing 46
- preflighting 41
- separations, previewing 46
- soft proofing 49
- transparency flattening, previewing 45

Acrobat 6 Layered preset, PDF 38

Acrobat Capture software 18

Acrobat Distiller. *See* Distiller

Acrobat, comparing versions 64

Adobe PDF printer

- creating custom page sizes 18, 29
- creating PDF documents 30
- preferences 28

Adobe PDF settings. *See* PDF settings

advanced options, PDF settings 71

aliasing inks 7

applications covered in guide 1

automatically creating PDF files 34

## C

calibrating monitors 8

CID-encoded fonts 40

cleaning up PDF documents 54, 57

color

- importing graphics 7
- options, PDF settings 68
- printing in PostScript files 33
- synchronizing in applications 8

color management

- basics 8
- color settings 8
- when printing 16

combining

- multiple file types 32
- PostScript files 32, 34

compatibility, Acrobat versions 64

composites, printing 58

compression in PDF output 65

converting

- HTML files 32
- multiple file types 18, 32
- paper documents to PDF 18
- screen captures 18
- spot colors 7

creating PDF files. *See* PDF creation

cross-product workflows 11

customizing

- page sizes (Mac OS) 19
- page sizes (Windows) 18, 29
- PDF settings 38

## D

default PDF settings files 39

desktop printing

- for proofing 49
- preparing for 6

DeviceN color space 41

digital masters 1

digital printing, preparing for 6

Distiller

- creating PDF files 31
- default settings files 37
- options for PDF settings 63
- watched folders 34

document properties 40

document security 29

downsampling in PDF files 65

Dynamic Zoom tool 48

## E

editing

- images and objects 51, 52
- text 50

encoding fonts 40

EPS files 7

EPS Font Scanner 10

external editing applications 52

## F

filename extensions

- color settings file (.csf) 8
- job options (.joboptions) 32, 39
- PDF/X-compliant report (.log) 38, 74
- PostScript file (.prn or .ps) 33
- preflight package (.kfp) 44
- transparency flattener preset (.flst) 15

flattener presets

- choosing (Illustrator) 22
- choosing (InDesign) 23
- filename extension 15
- predefined 14
- saving and loading 15

flattening

- about 11
- presets (Illustrator and InDesign) 14
- previewing (Acrobat) 45
- previewing (Illustrator and InDesign) 12

fonts

- changing 50, 51
- downloading to printer 9
- embedding 10
- encoding 10, 40
- EPS graphics 10
- including in PostScript files 34



- information on 40
  - listed in document properties 40
  - options, PDF settings 67
  - removing and viewing 53
  - substituting 9, 40
- FrameMaker
- creating PDF files 24, 26
  - creating PostScript files 36, 37
- FTP transfer, PostScript files 34
- G**
- general options, PDF settings 64
- glyphs 9
- H**
- handing off PDF files 5, 58
- High Quality preset, PDF 37
- high-end printing, preparing for 5
- I**
- Illustrator
- creating PDF files 21
  - creating PostScript files 34
  - editing objects in Acrobat 52
  - printer presets 34
- Illustrator Default preset, PDF settings 38
- images
- accessing high-resolution 58
  - converting to PDF 32
  - editing 51, 52
- images options, PDF settings 65
- importing preflight profiles 44
- InDesign
- creating PDF files 22
  - creating PostScript files 35
  - preflighting 17
  - printer presets 35
- Ink Manager 46
- aliasing inks 7
  - specifying ink plates 23
- J**
- joboptions file, default location 39
- L**
- layers, preserving in PDF files 38
- links in PostScript files 36
- Loupe tool 48
- M**
- magnification tools 47
- O**
- objects, editing 51
- optimizing documents for print 53
- overprinting
- converted spot colors 46
  - previewing effects of 6, 46
- P**
- PageMaker
- creating PDF files 23
  - creating PostScript files 35
  - printer styles (presets) 35
- pages
- customizing size in PostScript files 33
  - renumbering 57
  - viewing information on size 42
- Pan & Zoom Window command 48
- PDF creation
- automatic 34
  - from Distiller 31
  - from FrameMaker 24, 26
  - from Illustrator 21
  - from InDesign 22
  - from PageMaker 23
  - from Photoshop 20
  - methods for 18
  - multiple files 32
- PDF/X-compliant files 73
- presets, using 20
- Print command 30
- PDF files
- See also* PDF creation
- compressing and downsampling 65
  - font embedding and substitution 9
  - handing off 5, 57, 58
  - high-resolution printing 5
  - optimizing 53
- PDF Optimizer 53, 54
- PDF settings
- adding custom 32
  - Adobe PDF printer, and 30
  - advanced options 71
  - color options 68
  - customizing 39
  - default 37
  - fonts options 67
  - general options 64
  - images options 65
  - PDF/X options 73
- PDF version capabilities 2
- PDF/X
- about 3
  - converting files to 73
  - presets, PDF settings 38
  - requirements for 3
- PDFMaker for PDF creation 18
- Photoshop
- creating PDF files 20
  - creating PostScript files 34
  - editing images in Acrobat 52
- PostScript files
- combining 32, 34
  - creating from applications 33
  - creating from FrameMaker 36, 37
  - creating from Illustrator 34

- creating from InDesign 35
- creating from PageMaker 35
- creating from Photoshop 34
- distilling 35
- FTP transfer 34
- naming 33, 36
- saving documents as 33
- tips for creating 33
- watched folders 34
- PostScript printing 36
- PostScript® File printer 35
- predefined Adobe PDF settings 39
- preferences
  - Adobe PDF printer 28
  - default editing applications 53
- preflighting in Acrobat
  - about 41
  - package files 44
  - performing a preflight inspection 42
  - profiles for 41, 44
  - reports, creating 58
  - results, viewing 42
- preflighting in InDesign 17
- preserving layers in PDF files 38
- presets
  - about 5
  - flattener 14, 15
  - PDF 20, 37
  - printer 34, 35
- Press preset, PDF 38
- Press Quality preset, PDF 38
- previewing
  - font substitution 40
  - overprinting 46
  - separations 46
  - transparency 45
- print file 33
- Print preset, PDF 37
- print service provider resources 59
- printer presets
  - creating in Illustrator 34
  - creating in InDesign 35
  - creating in PageMaker 35
- printing
  - composites 58
  - optimizing documents for 53
  - preferences, Adobe PDF printer 28
  - proofs without graphics 10
  - separations 58
- profiles
  - device 8
  - preflight 41
- R**
  - removing
    - embedded fonts 53
    - items in PDF files 54, 57
    - security 57
  - renumbering PDF pages 57
  - reports, preflight 58
  - requirements for PDF/X compliance 3
  - resources for technical information 59
- S**
  - Save Preset command 21, 23
  - security
    - PDF files 33
    - removing in PDF documents 57
  - separations
    - previewing 46
    - printing 58
  - Snap view, activating in Preflight 43
  - soft proofing PDF documents 49
  - specifying ink plates (InDesign) 23
  - spot colors
    - converting to CMYK 7
    - overprint previewing 46
  - Standard preset, PDF 38
- styles
  - PDF (PageMaker) 24
  - printer (PageMaker) 35
- synchronizing color in applications 8
- T**
  - text
    - converting to PDF 32
    - editing 50
  - TIFF files 7
  - tips for creating PostScript files 33
  - tips, PDF creation
    - desktop printing 6
    - digital printing 6
    - high-end printing 5
  - TouchUp tool
    - for objects 51
    - for text 50
    - preferences 53
  - transparency flattener presets. *See* flattener presets
  - transparency flattening. *See* flattening
  - troubleshooting
    - preflight problems 42
    - using Adobe Web site 60
- U**
  - Use Local Fonts option 40
  - User to User forums 59
- V**
  - viewing
    - embedded fonts 53
    - preflight results 42
- W**
  - watched folders, setting up 34
  - Web resources 59
  - Write PostScript to File option 36
- Z**
  - Zoom In and Zoom Out tools 47